



ZOJE

中捷

超高速小筒绷缝机

ZJS2500A

SUPER HIGH SPEED CYLINDER BED INTERLOCK SEWING MACHINE

使用说明书 零件手册

OPERATION MANUAL
PARTS BOOK

中国·中捷缝纫机股份有限公司
ZOJE SEWING MACHINE CO.,LTD.

前 言

Preface

1、感谢您使用我公司生产的高速小筒绷缝机。

Congratulations and thank you for using high-speed cylinder bed interlock sewing machine manufactured by our company Sewing Machine Co.,Ltd.

2、在安装和使用之前，请仔细阅读本手册。若您不遵守本手册的说明而造成的人身伤害、机器损坏及其他财物损失我们将不承担责任。如有疑问，请与我们联系，我们将及时、热情地为您提供服务。

Please read this manual carefully before installing and using. If you do not abide by this manual that result in human hurt, machine damaged or some other losses, we will not be responsible for them. If you have any questions, please contact us, we will provide you in time and warm service.

3、本手册主要对高速绷缝机的结构特征、工作原理、安装与调试、使用与维护、故障分析与排除以及运输等方面作出说明。

This manual mainly describes the structure features, working principle, installation & debugging, usage & maintenance, failure analysis & solution, delivery etc.

4、本手册适用高速绷缝机。用户特殊定制的其他规格的同类产品可参照使用。

This manual is suitable for C2, some customize product can take this manual for reference.

5、本手册中出现的 product 外观图或其他图例或菜单屏幕等若与实际产品有所不同，使用时以实际产品为准。

pared the manual with actual products, if there are some differences in the attached images and other images like menu screen, it will be subject to the actual product during operation.

6、公司的产品技术会不断创新，产品手册也会随之更改。以后的所有更改，均不另行通知。

With constant technology innovation of our company, operation manual will change in correspondence. Data afterwards are subject to change without notice.

| 目录 | INDEX | 页/PAGE |
|---------------|--|--------|
| 1. 安装 | INSTALL ATION | 1 |
| 2. 马达与皮带 | MOTOR AND BELT | 1 |
| 3. 润滑 | LUBRICATION | 2 |
| 4. 润滑油更换 | HOW TO CHANGE OIL | 2 |
| 5. 滤油器更换 | HOW TO CHANGE OIL FILTER | 2 |
| 6. 机针与线的冷却与润滑 | LUBRICATE AND THE COOLING OF NEEDLES AND THREADS | 3 |
| 7. 机针更换 | TO REPLACE NEEDLES | 3 |
| 8. 穿线方法 | THREADING | 4 |
| 9. 压线松紧度调整 | ADJUSTING THREAD TENSION | 4 |
| 10. 针线张力调整 | NEEDLE THREAD TENSION | 4 |
| 11. 上饰线张力 | TOP COVER THREAD TENSION | 5 |
| 12. 压脚调整 | ADJUSTING PRESSER FOOT | 5 |
| 13. 针距调节 | ADJUSTING STITCH LENGTH | 5 |
| 14. 差动比调整 | ADJUSTING DIFFERENTIAL FEED RATIO | 6 |
| 15. 压脚压力强度调整 | ADJUSTING THE PRESSURE OF PRESSER FOOT | 6 |
| 16. 棉屑清除 | CLEAN UP DUST | 6 |
| 17. 穿线图 | THREADING DIAGRAM | 7 |
| 18. 台板图 | TABLE CUT-OUT | 8 |
| 19. 重要安全事项说明 | IMPORT SAFETY INSTRUCTION | 9 |
| 20. 规格件表 | CONVERSION CHART | 10 |
| 21. 零件手册 | PARTS LIST | 11 |

1、安装

INSTALLATION

1. 依本机器附有台板裁制图及零件组合图所列之配件，依序安装防震机座、线架等。

1. Before installing machine, please refer table cut-out drawing, and the necessary attachment as enclosed, according to the sequence of installation, to fix cushion base, thread stand.

2. 马达之转向为顺时针方向，皮带之松紧度以用于相向内压下2cm为宜，同时为了安全起见，请将皮带防护罩盖上，并旋紧螺钉。（图1&2）

2. Be sure that the motor turning direction is clockwise, and the motor belt tension can be pressed with finger inward about 2cm. For safety reason, please fasten the belt cover.(Fig1&2)

3. 皮带轮与缝纫速度参照表1。

3. Regarding machine speed and motor pulley diameter, please refer to Table 1.

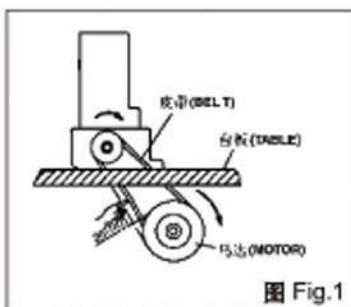


图 Fig.1

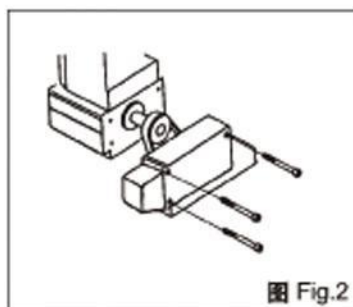


图 Fig.2

| S.P.M 转速 | MOTOR PULLEY SIZE 皮带轮尺寸 | | BELT 皮带 尺寸 |
|-------------|-------------------------------|-----|------------------|
| 6000 | 105 | 125 | 36" |
| 5500 | 95 | 115 | ↑ |
| 5000 | 85 | 105 | 35" |
| 4500 | 80 | 90 | ↑ |
| 4000 | 70 | 85 | 34" |

注意:

1. 使用新机器最初一个月运转速度约为最高转速的70%，并请选择正确的马达带轮尺寸（如表1）。

Remarks:

1. During the first month of using the machine, the maximum speed shouldn't exceed 70% of the speed listed in Table 1. Make sure to choose the correct size of motor pulley.

2. 台板厚度约50mm。

2. The standard thickness of Table is about 50mm.

2、马达与皮带

MOTOR AND BELT

1. 离合器马达（550w），3相2极M番V型皮带。

1. Clutch Motor (550W), 3 phase, 2 pole M type V belt.

2. 安装马达时，机器皮带轮与马达皮带轮的中线必须是一直线。

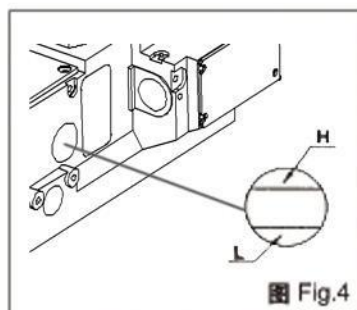
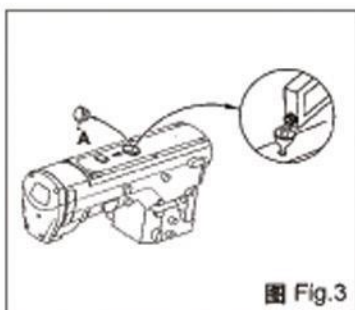
2. The center line of both motor's and machine's pulley must be aligned each other, when installing the motor.

3、润滑

LUBRICATION

1. 请选用M O B I L #1或E S S O #3或同级的润滑油。
2. 由于新机器在装运前已将油倒尽，因此新机器在使用前必须注入新油，转开上盖喷油窗(A)将油注入机器中，待油量满至油标指示上下线之间即可。(图3&4)
3. 每天必须检查，如果油已低于油标指示窗之下限，必须加注新油，当机器开始运转。操用前，必须检查整个润滑系统是否畅顺。

1. Please oil Mobit#10 or Esso#32 or its equivalent.
2. The lubricating oil has been drained from the machine before delivery, to remove screw(A), and fill the oil until the oil level reaches between lines H and L of oil level gauge. (Fig3&4)
3. Be sure to check every day and refill the oil, if oil level is lower than line L of oil level gauge.



* 新机器或久未使用的机器重新使用时，请先在针杆上下部加油润滑。

* Before starting a brand-new machine or a machine which has not been used for more than a couple of week, oiling the needle bar.

4、润滑油更换

HOW TO CHANGE OIL

1. 将螺丝(D)松开，使油槽之油完全排出后再锁紧。(图5)
2. 为延长本机器寿命，请于开始使用的四个星期后更换新油，尔后约每四个月更换一次。

1. Loosen Screw(D), drain all the oil from the tank, then fasten the screw. (Fig 5)
2. For extending the life of the machine, change oil after the initial 4-week operation. After that, change oil every four months.

5、滤油器更换

HOW TO CHANGE OIL FILTER

本机器特别装有滤油器，约每使用一个月后应卸下清洗，必要时得换新品。(图6)

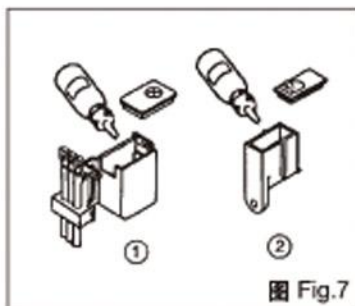
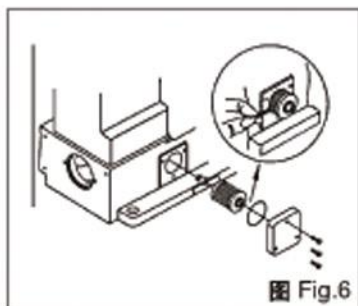
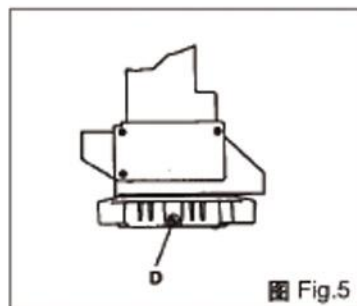
This machine is equipped with an oil filter, and the filter must be cleaned every month, replace the filter if necessary. (Fig 6)

6、机针与线冷却润滑

LUBRICATE AND THE COOLING OF NEEDLES AND THREADS

在油槽①②内注入硅油以防止断线。(图7)

Fill reservoir①and②with silicone oil to prevent the thread from breaking. (Fig 7)



7、机针更换

HOW TO REPLACE THE NEEDLES

1. 选用机针的规格与尺寸请参照(表2)。

1. See Table 2 of the sizes and the specifications of the needles.

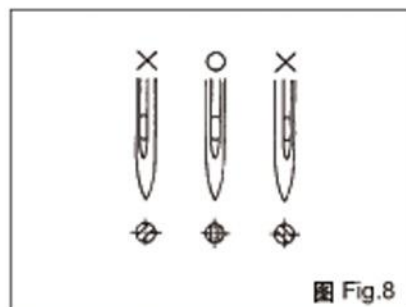
2. 旋转螺丝并取下针，将新针插至针座最底端，并使针的长沟面向自己。(图8)

2. Loosen Screw, then pull out the used needles. inset the new needles into the holder holes as far as they can go, and let the long groove of the needle face you. (Fig 8)

3. 重新锁紧螺丝。

3. Fasten Screw.

| Table (表2) | | |
|----------------------|-----------------|-----------|
| Needle System 针代号 | Needle Size/针尺寸 | |
| | 2 Needles | 3 Needles |
| SCHMETTZ UY128GAS | #70 | #75 |
| ORGAN 128GAS | #10 | #11 |



* 特殊机种针的代号请参考规格表。

* Needle size of special model, please refer to conversion Chart.

8、穿线方法

THREADING

应按照不同缝合情况穿线，错误的穿线方法将引起断线、跳线针或缝样不平等现象。必须参照第七页穿线图。

Follow the procedures shown in(Fig 9)for threading. Wrong threading may cause thread breaking, skipping stitch, puckering or unexpected sewing. Please refer to Page 7.

9、压线松紧度调整

ADJUSTING THREAD TENSION

线的拉力强度必须根据缝料的材质厚薄。线与针距不同而调整，将调节旋钮顺时针方向旋转，线压得越紧；向逆时针方向旋转，线压力越轻。(图 9)

The tension of the thread should be adjusted according to:

1. The material and the thickness of the fabric being sewed;
2. The thread;
3. The needle gauge.

If you turn the thread tension knob clockwise, thread will be tighter. (Fig 9)

If you turn it counterclockwise, will be looser.

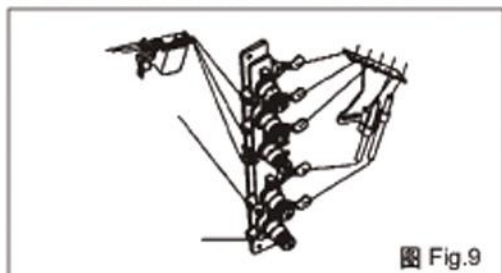


图 Fig.9

10、针线张力调整

Needle thread tension

当针杆处于上限位置时，针线挑线杆A的a边处于水平状态，其顶部距螺钉B中心为52mm，这是标准的。紧线时，先松螺钉B，将针线挑线杆向Y向移动，相反，松线时向X向移动。如果通过以上调整针线张力还未能调好，可以松掉螺钉C移动油箱固定板来调整，向Y同移动时线收紧，向X向移动时线放松，在标准状态下，穿线孔上边缘到螺钉C中心距离为8mm。(图10&11)

The part(a) of Needle Thread take-up(A)is horizontal when its tip is 52mm from the center of Screw(B) and Needle Bar is at its highest position. That is the standard. To tighten needle thread, move Needle Thread Take-up(A) in the direction of (Y),and to release, move it in the direction of (X). This adjustment is made by loosening Screw (B) (Fig.10)

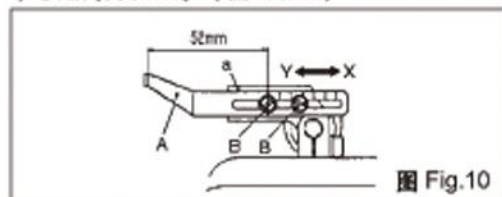


图 Fig.10

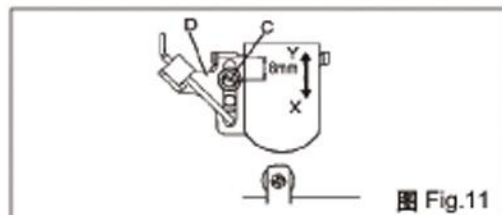


图 Fig.11

When this adjustment is not sufficient,check thread tension by moving Thread Eyelet (D)after loosening Screw (C). When it is moved in the direction of (Y),the thread is tightened and in the direction(X),the thread is loosened. The upper end of Eyelet is 8mm above the center of Serew(C). That is the standard adjustment. (Fig.11)

11、上饰线张力

TOP COVER THREAD TENSION

沿X向提升右绷线过线板A，线松弛，沿Y向降下右绷线过线板A，线收紧，当绷线为弹性线（如毛质线）时，线要松弛，松开螺钉B，降低右绷线过线板，并将毛质线从右绷线过线板的下孔穿过。（图12）

When raising Top Cover Thread Eyelet (Right)(A) to the direction(X),the thread take-up decreases,and descending it downward the thread take-up increases. When using stretchable thread such as woolly thread for top cover thread, descend Top Cover Thread Eyelet(Right)(A) to the direction (Y) by loosening Screw (B).In case of using woolly thread, pass it through the lower eye. (Fig.12)

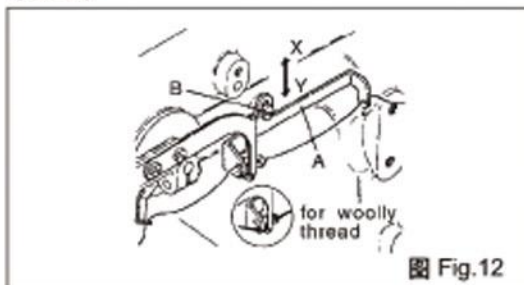


图 Fig.12

12、压脚调整

ADJUSTING PRESSER FOOT

松开螺钉①，左右摇动以调整压脚②，使针尖端刚好位于如示之中心点。调整后，再锁紧螺钉①。（图13）

Loosen Screw ① and adjust Presser Foot ② left and Right to a proper position to let the needle may get into the centre of Presser Foot's eyelet. After adjusting, tighten screw ①. (Fig.13)

13、针距调节

ADJUSTING STITCH LENGTH

针距调节范围为1.4—4.4mm，采用摇杆式针距调节机构，可轻松方便的调整针距。（图14）

Stitch length can be adjusted from 1.4-4.4mm, The micro stitch length regulating lever which could adjust the stitch length easily. (Fig.14)

松开螺母①，上下移动针距调节杆②，调整针距。

To adjust the stitch length, loosen the nut ①, move the indicator ② up or down.

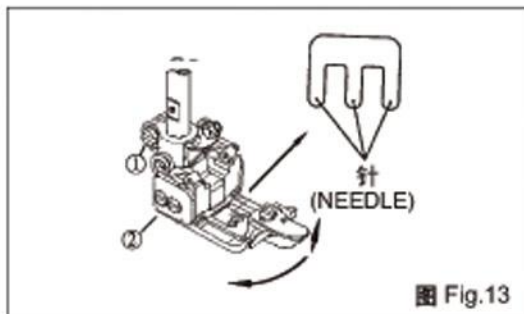


图 Fig.13

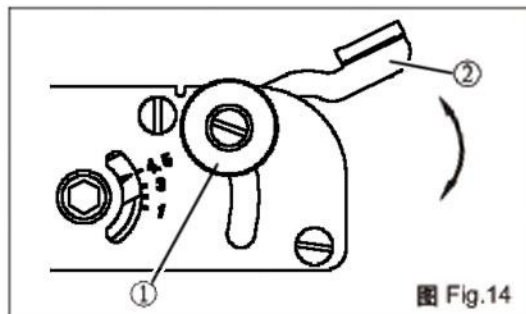


图 Fig.14

14、差动比调整

ADJUSTING DIFFERENTIAL FEED RATIO

本机器之差动比可从1:0.7调整至1:1.5, 松开螺钉②, 上下移动调节拉杆①调整差动。(图15)

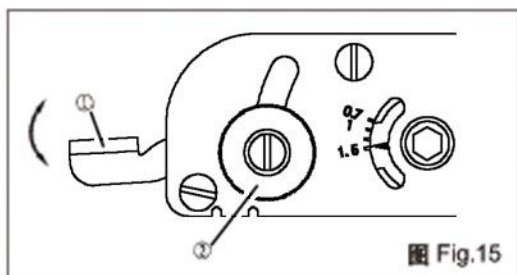
The differential feed Ratio of this machine is adjustable from 1:0.7 to 1:1.6. (Fig.15) To adjust the ratio, loosen the screw ②, move the adjusting slick block ① up or down.

* 要伸张布料车缝即差动变小时, 则将调节滑块往下移。

* To stretch the cloth, or minish the feed ratio, move the Adjusting Slide Block ① downward.

* 需要褶皱车缝即差动调大时, 则将调节滑块往上移。

* To gather the cloth, or in crease the feed ratio, move the Adjusting Slide Block ① upward.



15、压脚压力强度调整

ADJUSTING THE PRESSURE OF PRESSER FOOT

在布料推送顺畅且缝合完美之情况下, 压脚压力尽量轻些。(图16)

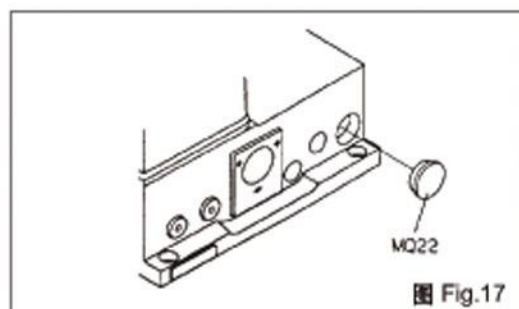
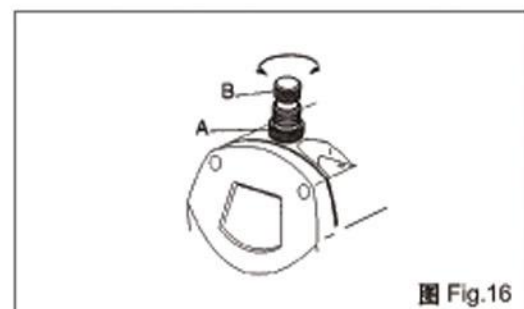
Pressure of the Presser Foot should be as light as possible, so that cloth can be feed and sewed smoothly.(Fig.16)

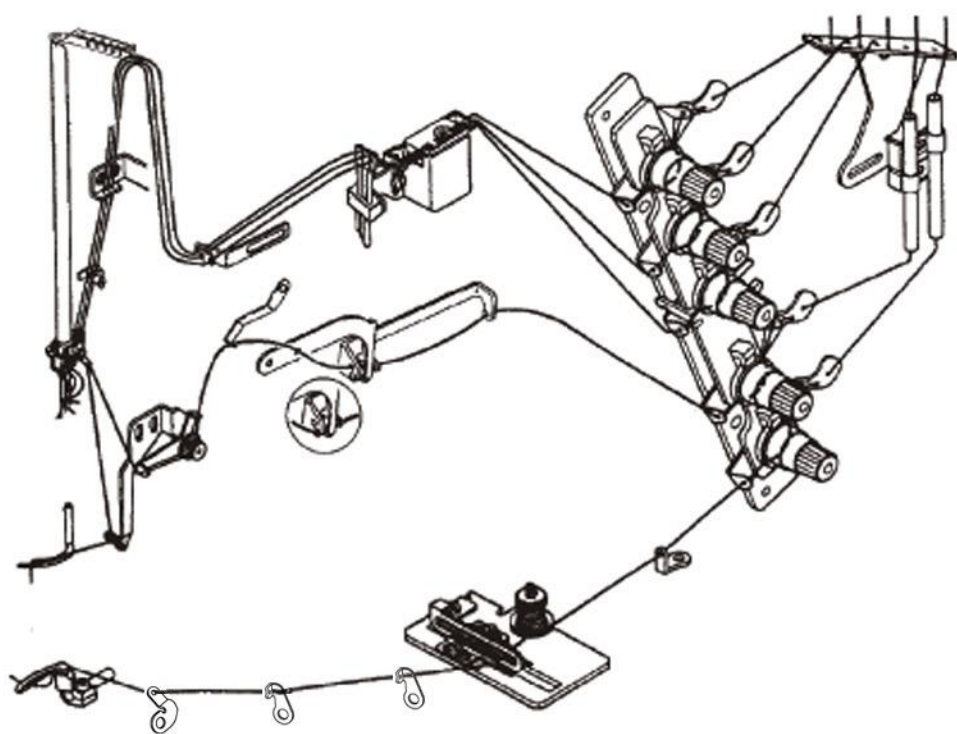
16、棉屑清除

CLEAN UP DUST

请定期打开MQ22, 清除棉屑, 以维护机器寿命。(图17)。

Please unplug the stopper MQ22, clean up dust and waste every month.(Fig.17)





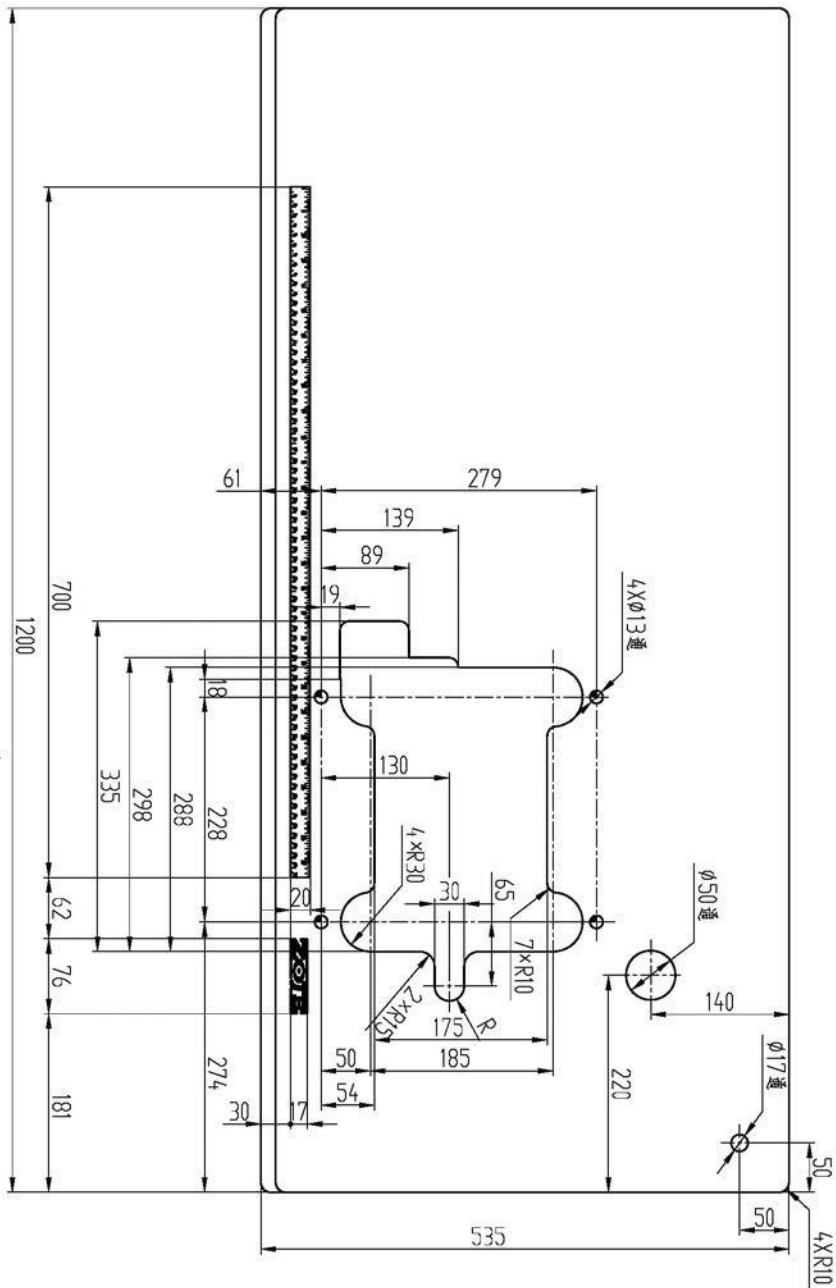
18、台板图(1)

TABLE CUT-OUT (1)

FOR: S2500A-BD

单位/UNIT:MM

除孔直径外，外框尺寸±3，其余尺寸±1，孔直径尺寸要求为±0.5。



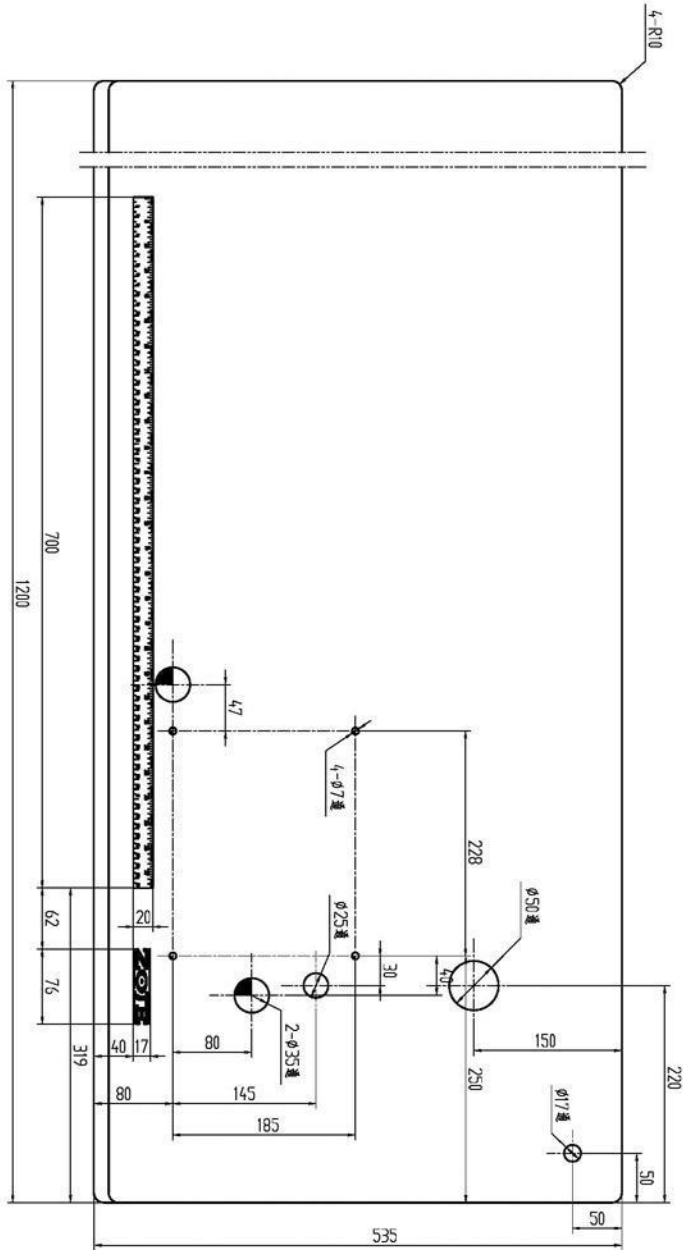
18、台板图(2)

TABLE CUT-OUT (2)

FOR: S2500A-BD

单位/UNIT: MM

除孔直径外，外框尺寸±3，其余尺寸±1，孔直径尺寸要求为±0.5。



19、重要安全事项说明

IMPORT SAFETY INSTRUCTION

1. 搬运作业

- (1). 使用机头袋将机器包装防护。
- (2). 放入纸箱内。
- (3). 用手推车或二人用双手抬动搬运。

2. 储存作业

- (1). 机器不使用时，应用防尘罩将其罩上。
- (2). 避免储存于高于45℃以上的高温。

3. 作业中

机器不要在高于40℃以上的温度工作。

4. 警告

在贴有警告标示之处请注意

1. 机械运动部份，请注意装上保护装置。

2. 穿线、换线、调整、清洁时请注意关闭电源。

1. Transportation

- (1). The machine packed with machine cover.
- (2). Put the machine into a carton.
- (3). Use a cart or by two men's hands to move it.

2. Storage

- (1). The machine must use duster-cover to cover it when it did not work.
- (2). The machine avoid to storage in the temperature more than 45℃.

3. Working

The machine doesn't work over 40℃.

4. Warning

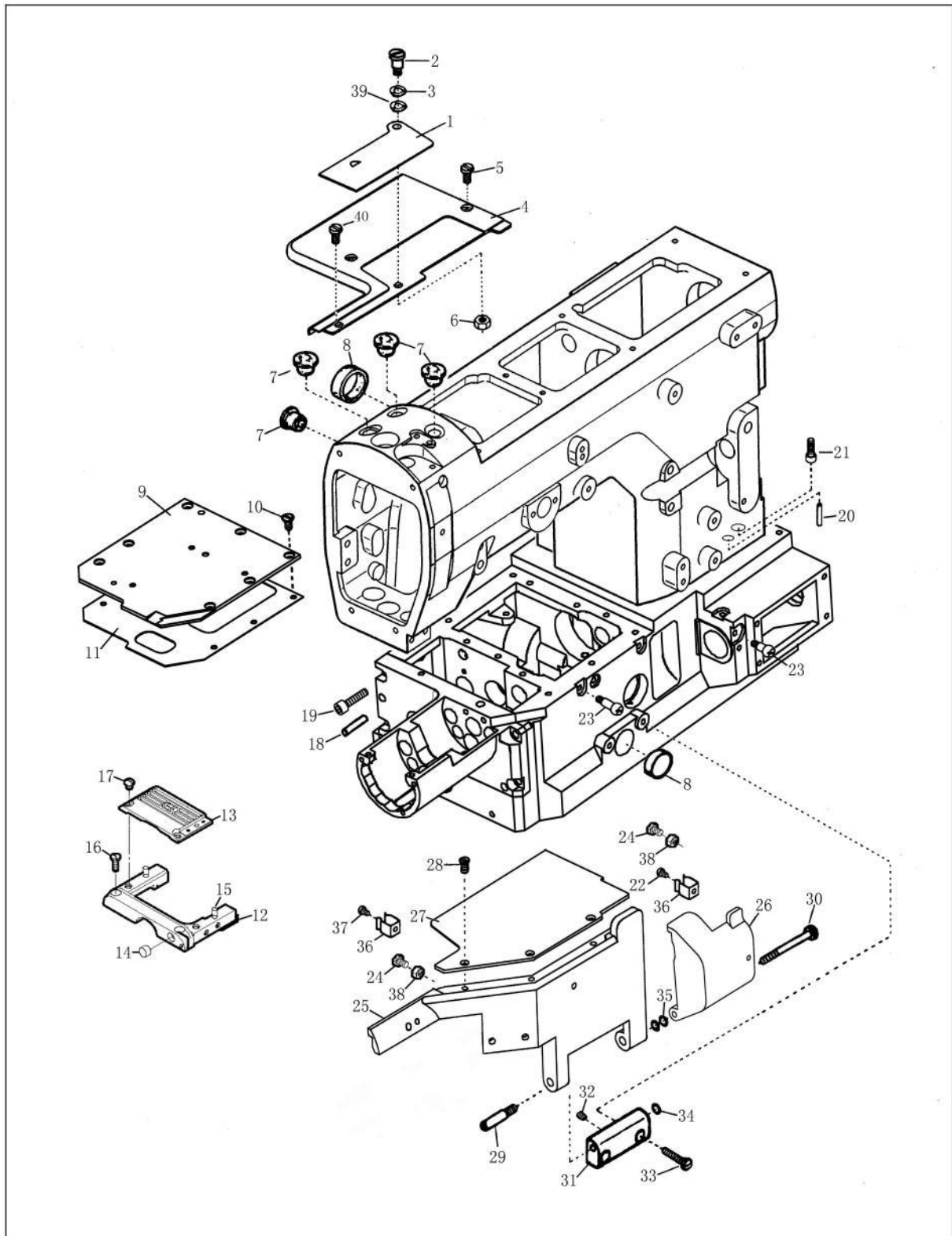
1. Pay attention to this warning advice as follow.

- a. Working area is dangerous.
- b. Never touch the needle if the machine is still running.
- c. Be careful if you infeed fabric.
- d. Do not insert your finger between needle and roller for transportation on fabric.

2. Pay attention to the warning sticker.

- a. Movable parts must be enclosed with guard when you operate.
- b. Pull out the plug from socket when you adjust, thread, change bobbin and needle clean.

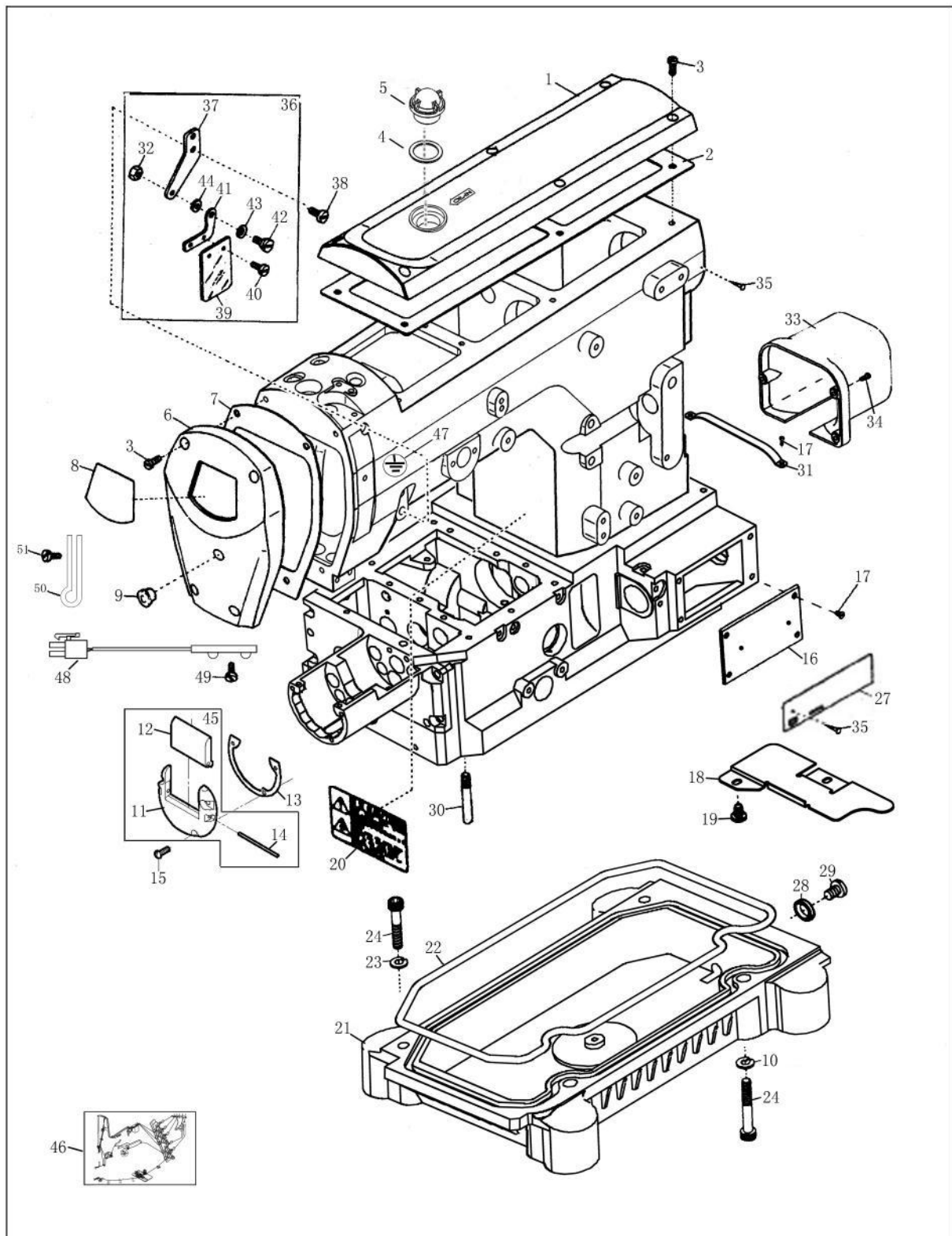
| 目录 | CONTENTS | 页/PAGE |
|-----------|--|--------|
| 1 机壳部件(1) | MISCELLANEOUS COVERS (1) | 13 |
| 2 机壳部件(2) | MISCELLANEOUS COVERS (2) | 15 |
| 3 过线部件 | MISCELLANEOUS THREAD EYELETS | 17 |
| 4 上轴及挑线部件 | UPPER SHAFT & NEEDLE THREAD TADKE-UP MECHANISM | 19 |
| 5 抬压脚部件 | PRESSER FOOT MECHANISM | 21 |
| 6 针杆部件 | NEEDLE BAR MECHANISM | 23 |
| 7 主轴部件 | MAIN SHAFT DRIVING MECHANISM | 25 |
| 8 弯针部件 | LOOPER DRIVING MECHANISM | 27 |
| 9 抬牙送布部件 | FEED DRIVING MECHANISM | 29 |
| 10 针距调节部件 | | 31 |
| 11 差动调节部件 | FEED DRIVING CONTROL MECHANISM | 33 |
| 12 绷针部件 | SPREADER MECHANISM | 35 |
| 13 润滑部件 | LUBRICATING MECHANISM | 37 |
| 14 附件盒 | ATTACHMENT BOX | 39 |
| 15 线架 | THEAD STAND | 41 |
| 16 包装箱 | BOX | 43 |



机壳部件(1)

MISCELLANEOUS COVERS(1)

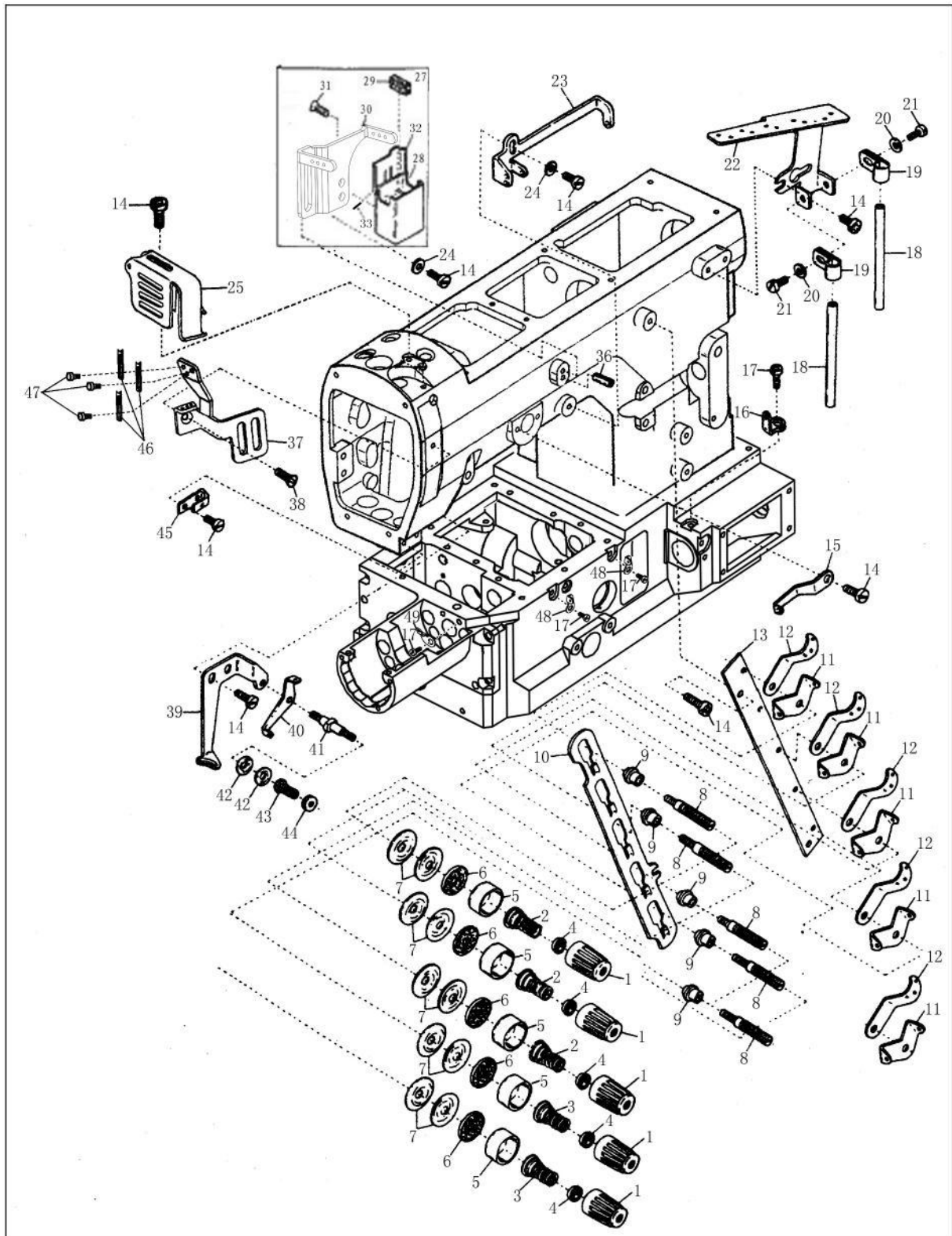
| 序号 No. | 件号 Pars No. | 名称 | Description | 数量 Number |
|-----------|----------------|-------------------|-----------------------------|--------------|
| 1 | 10012292 | 上罩板摇板 | Looper Thread Take-up Cover | 1 |
| 2 | 10029658 | 螺钉 | Screw | 1 |
| 3 | 10002995 | 垫圈 | Washer | 1 |
| 4 | 20009657 | 上罩板焊合件 | Cloth Plate | 1 |
| 5 | 10013178 | 螺钉 (M4×12) | Screw (M4×12) | 2 |
| 6 | 10029659 | 螺母 | Nut | 1 |
| 7 | 10013170 | 橡胶塞 | Seal Pulg | 4 |
| 8 | 10011186 | 油封 | Oil Seal | 3 |
| 9 | 10029675 | 弯针传动盖 | Crant Chamber Cover | 1 |
| 10 | 10012641 | 螺钉 (M4×6.4) | Screw (M4×6.4) | 7 |
| 11 | 10029676 | 弯针传动防油垫 | Crant Chamber Cover Gasket | 1 |
| 12 | 10029804 | 针板接板组件 | Stitch Plate Support | 1 |
| 13 | ***** | 针板 | Stitch Plate | 1 |
| 14 | 10029669 | 针板接板磁铁 | Stitch Plate Support Magnet | 1 |
| 15 | 10029670 | 针板接板销 | Stitch Plate Support Pin | 2 |
| 16 | 10013969 | 螺钉 | Screw (M3.5×6) | 2 |
| 17 | 10012211 | 螺钉 (M3.5×4) | Screw (M3.5×4) | 2 |
| 18 | 10012125 | 销 | Pin | 2 |
| 19 | 10012073 | 螺钉 | Screw (M5×16) | 4 |
| 20 | 10007433 | 销 | Pin | 2 |
| 21 | 10007432 | 螺钉 | Screw (M10×30) | 4 |
| 22 | 10004171 | 螺钉 (M4×4.5) | Screw (M4×4.5) | 1 |
| 23 | 10029652 | 螺钉 | Screw | 2 |
| 24 | 10042387 | 螺钉 (M4×12) | Screw (M4×12) | 2 |
| 25 | 20009652 | 穿线罩板 | Front Cover | 1 |
| 26 | 20009654 | 打线凸轮罩板 | Looper Thread Take-up Cover | 1 |
| 27 | 20009653 | 穿线罩板盖 | Front Cover (Upper) | 1 |
| 28 | 10035251 | 螺钉 (M3.5×5) | Screw (M3.5×5) | 3 |
| 29 | 10012598 | 螺钉 (M4×8) | Screw (M4×8) | 1 |
| 30 | 10029654 | 螺钉 | Screw | 1 |
| 31 | 20014414 | 穿线罩板铰链 | Front Cover Hinge | 1 |
| 32 | 10009074 | 螺钉 (M4×4) | Screw (M4×4) | 1 |
| 33 | 10012594 | 螺钉 (M4×18.5) | Screw (M4×18.5) | 2 |
| 34 | 10003073 | 垫圈 | Washer | 1 |
| 35 | 10003026 | 垫圈 | Washer | 2 |
| 36 | 10011220 | 弹簧 | Spring | 2 |
| 37 | 10012728 | 螺钉 (M3.5×4) | Screw (M3.5×4) | 2 |
| 38 | 10042544 | 螺母 (M4) | Nut (M4) | 2 |
| 39 | 10013509 | 垫圈 (6.5×11.3×0.6) | Washer (6.5×11.3×0.6) | 1 |
| 40 | 10012253 | 螺钉 (M3×8) | Screw (M3×8) | 1 |



机壳部件(B)

MISCELLANEOUS COVERS(B)

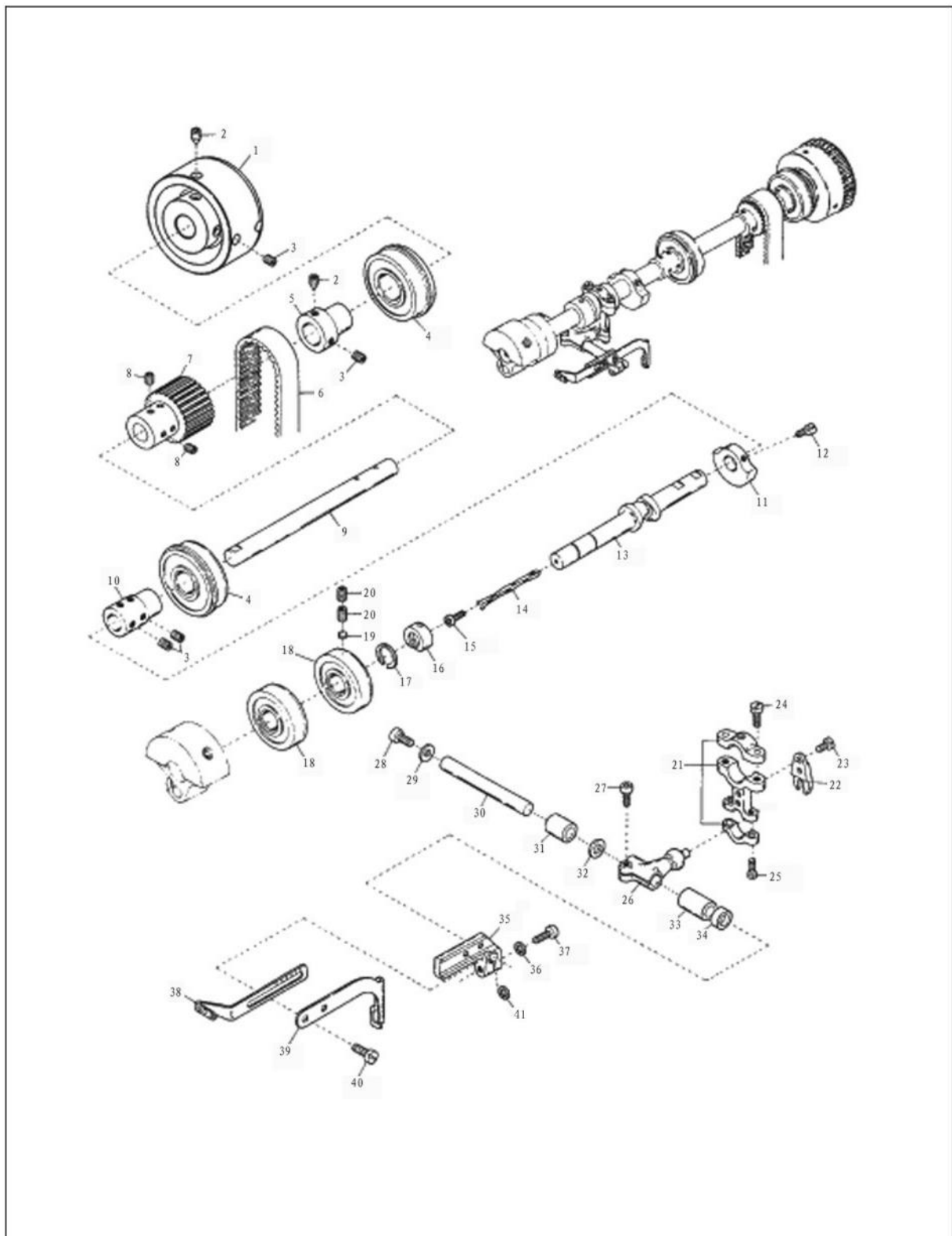
| 序号 No. | 件号 Pars No. | 名称 | Description | 数量 Number |
|-----------|----------------|-----------------|------------------------------|--------------|
| 1 | 20003608 | 上盖板 | Top Cover | 1 |
| 2 | 10012294 | 上盖板油垫 | Top Cover Gasket | 1 |
| 3 | 10042387 | 螺钉(M4×12) | Screw(M4×12) | 10 |
| 4 | 10009156 | 油窗橡胶圈 | | 1 |
| 5 | 10008938 | 上盖油窗 | Oil Sight Window | 1 |
| 6 | 20006670 | 面板A | Head Cover | 1 |
| 7 | 10010189 | 面板油垫 | Head Cover Gasket | 1 |
| 8 | 10005468 | 面板装饰牌 | Emblem | 1 |
| 9 | 10013170 | 橡胶塞 | Seal Pulg | 1 |
| 10 | 10003331 | 垫圈 | Spring Washer | 2 |
| 11 | 10029680 | 细筒前盖 | Cover | 1 |
| 12 | 10029681 | 细筒翻盖 | Cover | 1 |
| 13 | 10029679 | 细筒油垫 | Gasket | 1 |
| 14 | 10029682 | 细筒盖销 | Pin | 1 |
| 15 | 10027421 | 螺钉(M3×8.8) | Screw(M3×8.8) | 3 |
| 16 | 20009655 | 盖板 | Cover | 1 |
| 17 | 10010594 | 螺钉(M4×7.5) | Screw(M4×7.5) | 6 |
| 18 | 10029661 | 底罩板 | Cover | 1 |
| 19 | 10012723 | 螺钉(M4×5) | Screw(M4×5) | 2 |
| 20 | 10008936 | 机头安全提示牌 | Safety-indicating Plate | 1 |
| 21 | 10029665 | 油盘 | Oil Reservoir | 1 |
| 22 | 10029664 | 油盘垫 | Oil Reservoir Gasket | 1 |
| 23 | 10006282 | 垫圈 | Washer | 2 |
| 24 | 10003142 | 螺钉(M8×25) | Screw(M8×25) | 4 |
| 25 | | | | |
| 26 | | | | |
| 27 | ***** | 型号牌 | | 1 |
| 28 | 10009263 | 垫圈组件 | Washer | 1 |
| 29 | 10009264 | 螺钉(SM3/8"×28) | Screw(SM3/8"×28) | 1 |
| 30 | 10012684 | 底板支柱 | Machine Frame Supporting Bar | 4 |
| 31 | 20009656 | 后罩板 | Cover | 1 |
| 32 | 10011170 | 螺母 | Nut | 1 |
| 33 | 10012174 | 电机护罩 | Mini-Servo Motor Cover | 1 |
| 34 | 10042412 | 螺钉(M4×10) | Screw(M4×10) | 3 |
| 35 | 10002840 | 铆钉 | Rivet | 3 |
| 36 | 20002142 | 安全板组件 | Eye Guard, Complete Set | 1 |
| 37 | 10011179 | 安全架座 | Safety Plate Support | 1 |
| 38 | 10011618 | 螺钉(M6×9) | Screw(M6×9) | 1 |
| 39 | 10011164 | 安全板 | Safety Plate | 1 |
| 40 | 10011176 | 螺钉(SM3/32"×56) | Screw(SM3/32"×56) | 2 |
| 41 | 10011167 | 安全板架 | Safety Plate Holder | 1 |
| 42 | 10011178 | 螺钉(SM11/64"×40) | Screw(SM11/64"×40) | 1 |
| 43 | 10011261 | 垫圈 | Spring Washer | 1 |
| 44 | 10011168 | 垫圈 | Washer | 1 |
| 45 | 10029805 | 细筒前盖组件 | | 1 |
| 46 | 10012251 | 穿线图 | | 1 |
| 47 | 10008974 | 机头接地提示牌 | | 1 |
| 48 | 10010564 | 衣车灯☆ | | 1 |
| 49 | 10009600 | 螺钉(M3×6) | | 1 |
| 50 | 10038057 | 机头灯线夹 | | 3 |
| 51 | 10011264 | 螺钉(M4×8) | | 3 |



过线部件

MISCELLANEOUS THREAD EYELETS

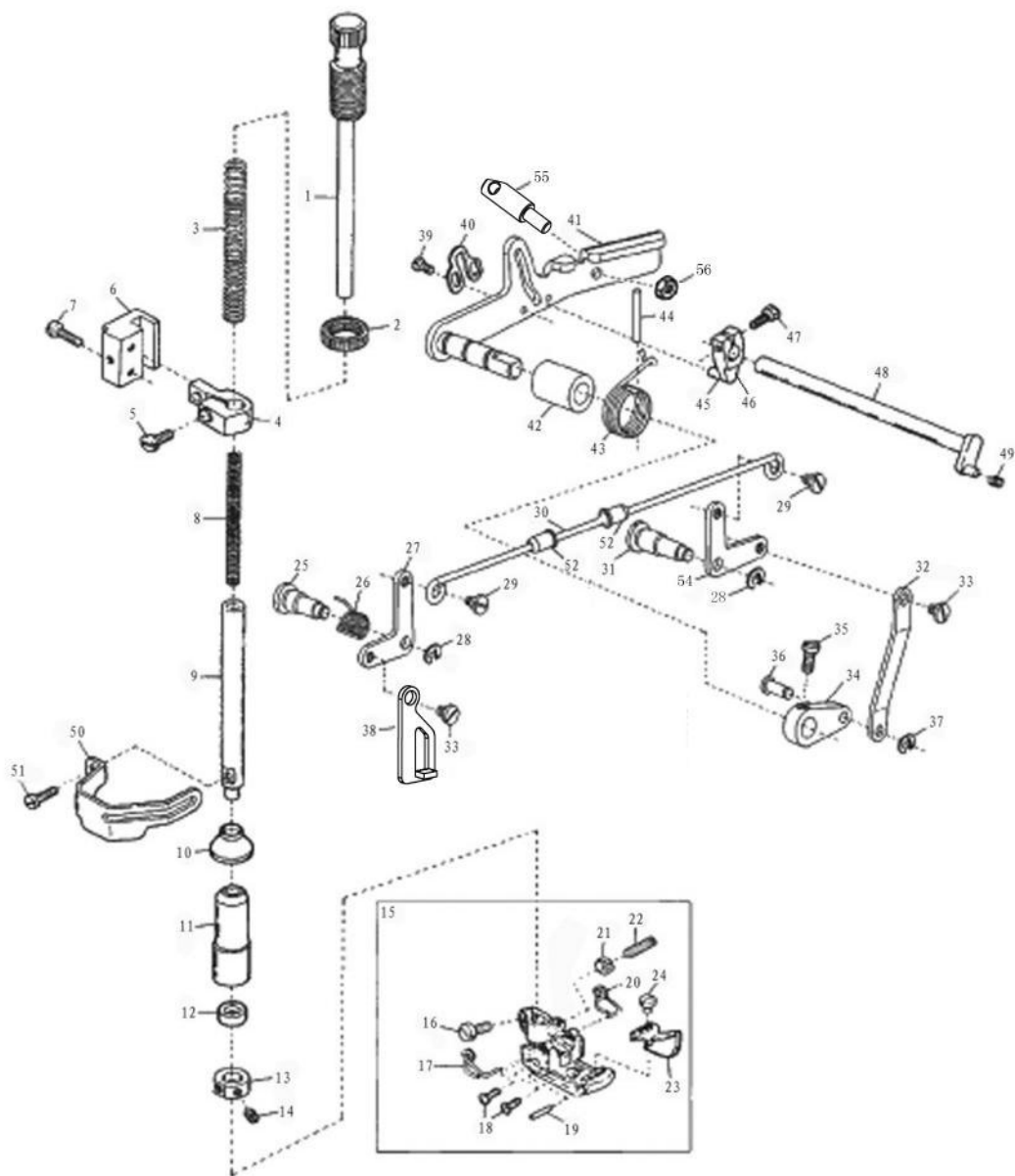
| 序号 No. | 件号 Pars No. | 名称 | Description | 数量 Number |
|-----------|----------------|-----------------|---------------------------------|--------------|
| 1 | 10002538 | 夹线螺母 | Thread Tension Spring Cap | 5 |
| 2 | 10004233 | 弹簧 | Spring | 3 |
| 3 | 10004240 | 弹簧 | Spring | 2 |
| 4 | 10003111 | 防松垫 | Tension Spring Disc Support | 5 |
| 5 | 10004231 | 夹线簧座 | Thread Tension Spring Retainer | 5 |
| 6 | 10004238 | 夹线板垫 | Felt | 5 |
| 7 | 10003116 | 夹线盘 | Tension Disc | 10 |
| 8 | 10004232 | 螺钉 | Screw | 5 |
| 9 | 10004236 | 松线板套管 | Tension Post Ferrule | 5 |
| 10 | 10004234 | 松线板 | Tension Disc Separater | 1 |
| 11 | 10004239 | 双线过线板 | Tension Disc Eyelet | 5 |
| 12 | 10004241 | 单线过线板 | Thread Lead-in Guide | 5 |
| 13 | 10004235 | 夹线底板 | Tension Post Support | 1 |
| 14 | 10011264 | 螺钉 (M4×8) | Screw (M4×8) | 11 |
| 15 | 10010486 | 左绷缝过线板 | Top Cover Thread Eyelet (Left) | 1 |
| 16 | 10012768 | 弯针过线座 | Looper Thread Eyelet (Rear) | 1 |
| 17 | 10010594 | 螺钉 (M4×7.5) | Screw (M4×7.5) | 4 |
| 18 | 10033698 | 链弯竖过线管 | Thread Eyelet Pipe | 2 |
| 19 | 10008228 | SN-3A夹头 | | 2 |
| 20 | 10010696 | 垫圈 | Washer | 2 |
| 21 | 10009325 | 螺钉 (SM9/64"×40) | Screw (SM9/64"×40) | 2 |
| 22 | 10010691 | 总过线板 | Thread Guide Plate | 1 |
| 23 | 10010754 | 绷缝调节过线板 | Top Cover Thread Eyelet (Right) | 1 |
| 24 | 10010761 | 垫圈 | Washer | 2 |
| 25 | 10013910 | 针杆护罩组件 | Needle Thread Take-up Guard | 1 |
| 26 | | | | |
| 27 | 10002103 | 硅油盒组件 | SP Device, Complete Set | 1 |
| 28 | 10010753 | 面线润滑油箱 | SP Container | 1 |
| 29 | 10010687 | 毛毡 | Felt | 1 |
| 30 | 10010695 | 油箱座 | Needle Thread Eyelet | 1 |
| 31 | 10053226 | 螺钉 | Screw | 2 |
| 32 | 10010757 | 面线润滑油箱盖 | | 1 |
| 33 | 10002880 | 销2×Φ6 | pin | 2 |
| 34 | | | | |
| 35 | | | | |
| 36 | 10010750 | 销 | Pin | 1 |
| 37 | 10010499 | 面线中过线板 | Needle Thread Eyelet | 1 |
| 38 | 10011049 | 螺钉 (M4×8) | Screw (M4×8) | 1 |
| 39 | 10004130 | 绷缝勒线板 | Top Cover Thread Guide | 1 |
| 40 | 10010747 | 绷缝调节过线板 | Supplementary Thread Guide | 1 |
| 41 | 10004254 | 螺钉 | Screw | 1 |
| 42 | 10004255 | 绷针夹线板 | Supplementary Tension Disc | 2 |
| 43 | 10005522 | 弹簧 | Spring | 1 |
| 44 | 10004253 | 螺母 | Nut | 1 |
| 45 | 10012229 | 面线下夹线座 | Needle Thread Retainer Support | 1 |
| 46 | 10010523 | 针杆松线钉 | Needle Bow Diaplasia Plate | 3 |
| 47 | 10014413 | 螺钉 (M2.5×4) | Screw (M2.5×4) | 3 |
| 48 | 10029677 | 过线板 | Thread Guide Plate | 2 |
| 49 | 10029678 | 过线板 | Thread Guide Plate | 1 |



上轴及挑线部件

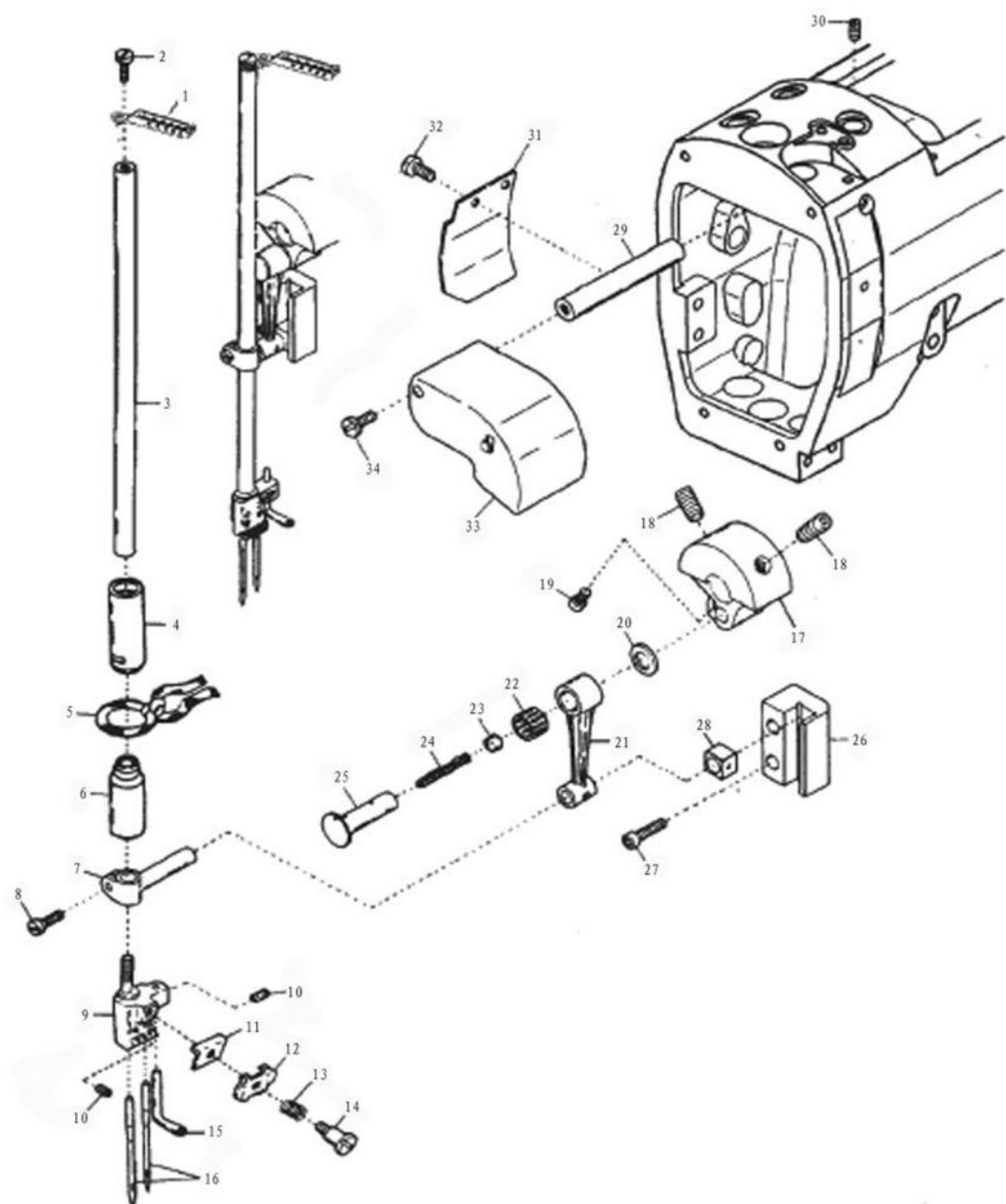
UPPER SHAFT & NEEDLE THREAD TAKE-UP MECHANISM

| 序号 No. | 件号 Pars No. | 名称 | Description | 数量 Number |
|-----------|----------------|----------------|--------------------------|--------------|
| 1 | 20003609 | 手轮☆ | Hand Wheel | 1 |
| 2 | 10011966 | 螺钉 (M6×8) | Screw (M6×8) | 2 |
| 3 | 10010907 | 螺钉 (M6×6) | Screw (M6×6) | 6 |
| 4 | 10025881 | 轴承 | Ball Bearing | 2 |
| 5 | 10010950 | 挡圈 | Hand Wheel Adapter | 1 |
| 6 | 10008146 | 同步齿形带 | Timing Belt (Upper) | 1 |
| 7 | 10012801 | 从动时规轮 | Upper Shaft Sprocher | 1 |
| 8 | 10011969 | 螺钉 (M6×5) | Screw (M6×5) | 4 |
| 9 | 10011163 | 上轴后节轴 | Upper Shaft | 1 |
| 10 | 10011172 | 上轴联接套 | Upper Shaft Joint | 1 |
| 11 | 10010955 | 上轴前接轴平衡块 | Counterweight (Small) | 1 |
| 12 | 10011264 | 螺钉 (M4×8) | Screw (M4×8) | 2 |
| 13 | 10004407 | 上轴前节轴 | Upper Crankshaft | 1 |
| 14 | 10008063 | 油线 φ1.5×180 | Oil Wick | 1 |
| 15 | 10012723 | 螺钉 (M4×5) | Screw (M4×5) | 1 |
| 16 | 10011072 | 上轴前节进油套 | Oil Sleeve | 1 |
| 17 | 10003290 | 挡圈 | Retaining Ring | 1 |
| 18 | 10025896 | 轴承 | Ball Bearing | 2 |
| 19 | 10011174 | 轴承支头螺钉垫 | Pulg | 1 |
| 20 | 10011177 | 螺钉 (M6×5) | Screw (M6×5) | 2 |
| 21 | 10004406 | 面线挑线连杆组件 | Connecting Rod | 1 |
| 22 | 10011052 | 球曲柄导向叉 | Guide Fork | 1 |
| 23 | 10040191 | 螺钉 (SM1/8"×44) | Screw (SM1/8"×44) | 2 |
| 24 | 10014395 | 螺钉 (M4×14) | Screw (M4×14) | 2 |
| 25 | 10011054 | 螺钉 (M3.5×10) | Screw (M3.5×10) | 2 |
| 26 | 10004409 | 面线挑线球曲柄 | Driving Lever | 1 |
| 27 | 10009008 | 螺钉 (M6×16) | Screw (M6×16) | 1 |
| 28 | 10010953 | 螺钉 (M5×10) | Screw (M5×10) | 1 |
| 29 | 10010954 | 垫圈 | Washer | 1 |
| 30 | 10010959 | 球曲柄轴 | Driving Shaft | 1 |
| 31 | 10011112 | 轴套 | Bushing | 1 |
| 32 | 10011171 | 垫圈 | Washer | 1 |
| 33 | 10011115 | 轴套 | Bushing | 1 |
| 34 | 10011180 | 油封 | Oil Seal | 1 |
| 35 | 10010956 | 面线挑线插座 | Bracket | 1 |
| 36 | 10005537 | 垫圈 | Washer | 1 |
| 37 | 10010958 | 螺钉 (M5×14) | Screw (M5×14) | 1 |
| 38 | 10010960 | 面线挑线杆 | Needle Thread Take-up | 1 |
| 39 | 10010957 | 绷线挑线杆 | Top Cover Thread Take-up | 1 |
| 40 | 10013159 | 螺钉 (M3.5×7.5) | Screw (M3.5×7.5) | 2 |
| 41 | 10032265 | 垫圈 | Washer | 1 |



| 抬压脚部件 | | PRESSER FOOT MECHANISM | | |
|-----------|----------------|------------------------|--------------------------------|--------------|
| 序号 No. | 件号 Pars No. | 名称 | Description | 数量 Number |
| 1 | 10004127 | 螺钉 | Screw | 1 |
| 2 | 10011913 | 螺母 | Nut | 1 |
| 3 | 10010492 | 调压簧 | Spring | 1 |
| 4 | 10011879 | 压杆导架部件 | Presser Bar Connecting Bracket | 1 |
| 5 | 10009037 | 螺钉 (M4×12) | Screw(M4×12) | 1 |
| 6 | 10011883 | 压杆导轨 | Presser Bar Guide | 1 |
| 7 | 10013732 | 螺钉 (SM11/64"×40) | Screw(SM11/64"×40) | 2 |
| 8 | 10011888 | 弹簧 | Spring | 1 |
| 9 | 10010496 | 压杆 | Presser Bar | 1 |
| 10 | 10011457 | 压紧杆防油罩 | Oil Protector Cover | 1 |
| 11 | 10011108 | 轴套 | Bushing | 1 |
| 12 | 10032359 | 油封 | Oil Seal | 1 |
| 13 | 10011878 | 挡圈 | Collar | 1 |
| 14 | 10011887 | 螺钉 (SM9/64"×40) | Screw(SM9/64"×40) | 2 |
| 15 | ***** | 压脚组件 | Presser Foot, Complete Set | 1 |
| 16 | 10009115 | 螺钉 (M3.5×8) | Screw(M3.5×8) | 1 |
| 17 | 10004710 | 弹簧 | Spring | 1 |
| 18 | 10003933 | 螺钉 (M2.5×4.2) | Screw(M2.5×4.2) | 4 |
| 19 | 10005598 | 销 | Pin | 1 |
| 20 | 10004809 | 弹簧 | Spring | 1 |
| 21 | 10005577 | 螺母 | Nut | 1 |
| 22 | 10005576 | 螺钉 | Screw | 1 |
| 23 | 10005595 | 导向片体 | Fabric Guide | 1 |
| 24 | 10005573 | 螺钉 (M2.5×3.5) | Screw(M2.5×3.5) | 1 |
| 25 | 10010521 | 杠杆螺纹销 | Lever Pin | 1 |
| 26 | 10010493 | 抬压脚复位扭簧2 | Spring | 1 |
| 27 | 10010463 | 抬压脚杠杆 | Presser Foot Lever | 2 |
| 28 | 10010649 | 挡圈 | Collar | 2 |
| 29 | 10013217 | 螺钉 (SM3/16"×40) | Screw(SM3/16"×40) | 2 |
| 30 | 10010464 | 抬压脚拉杆 | Presser Foot Rod | 1 |
| 31 | 10010524 | 后杠杆螺纹销 | Lever Pin | 1 |
| 32 | 10010403 | 三自动抬压脚连接板 | | 1 |
| 33 | 10003496 | 轴位螺钉 | Screw | 2 |
| 34 | 10010458 | 抬压脚曲柄 | Lifter Lever | 1 |
| 35 | 10011664 | 螺钉 (SM15/64"×28) | Screw(SM15/64"×28) | 1 |
| 36 | 10011886 | 销 | Pin | 1 |
| 37 | 10003248 | 挡圈 | Collar | 1 |
| 38 | 10010487 | 抬压脚升降板 | Lifter Link Plate | 1 |
| 39 | 10010904 | 螺钉 (SM9/64"×40) | Screw(SM9/64"×40) | 2 |
| 40 | 10011889 | 抬压脚限位板 | Lifter Lever Stop | 1 |
| 41 | 10010469 | 抬压脚凸轮板组件 | Lifter Lever | 1 |
| 42 | 10011105 | 轴套 | Bushing | 1 |
| 43 | 10010495 | 抬压脚复位扭簧1 | Spring | 1 |
| 44 | 10002772 | 销 | Pin | 1 |
| 45 | 10011628 | 销 | Pin | 1 |
| 46 | 10011617 | 抬压脚松线曲柄 | Tension Release Lever | 1 |
| 47 | 10011625 | 螺钉 (SM11/64"×40) | Screw(SM11/64"×40) | 1 |
| 48 | 10014069 | 松线曲柄轴组件 | Tension Release Shaft | 1 |
| 49 | 10011880 | 弹簧 | Spring | 1 |
| 50 | 10011881 | 机针前护架 | Finger Guard | 1 |
| 51 | 10011882 | 螺钉 (M3×4.6) | Screw(M3×4.6) | 1 |
| 52 | 10004599 | 扫线拉板橡胶罩 | Seal Pulg | 2 |
| 53 | | | | |
| 54 | 10010460 | 三自动抬压脚后杠杆 | | 1 |
| 55 | 10010502 | 抬压脚链钩销 | | 1 |
| 56 | 10003084 | M6螺母 | | 1 |

“*” 具体内容参看专用件表

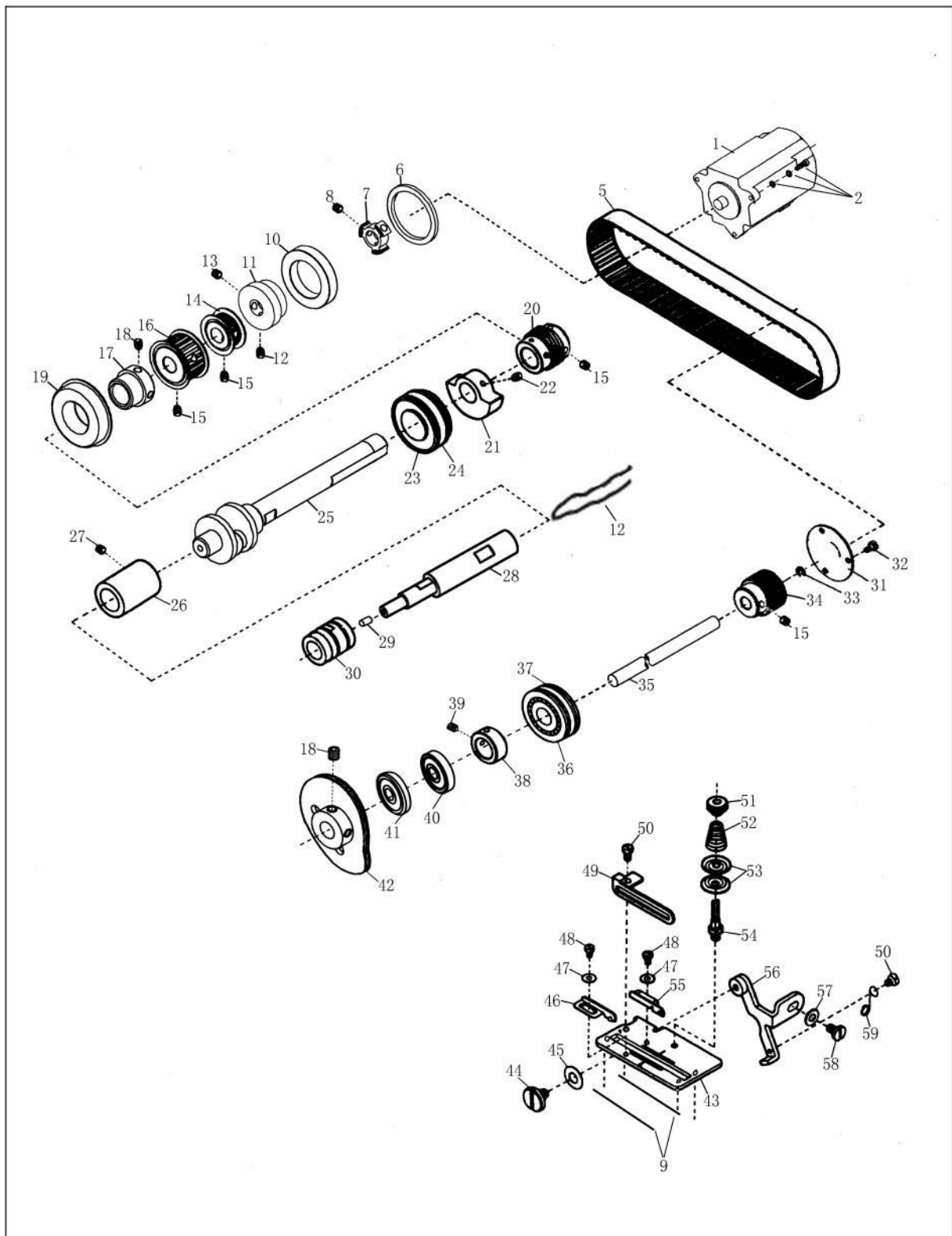


针杆部件

NEEDLE BAR MECHANISM

| 序号 No. | 件号 Pars No. | 名称 | Description | 数量 Number |
|-----------|----------------|-------------------------|------------------------------|--------------|
| 1 | 10013191 | 针杆挑线杆 | Needle Bar Thread Eyelet | 1 |
| 2 | 10010904 | 螺钉 (SM9/64"×40) | Screw (SM9/64"×40) | 1 |
| 3-1 | 10051692 | 针杆 | Needle Bar | 1 |
| 3-2 | 10051693 | 针杆 | Needle Bar | 1 |
| 4-1 | 10051696 | 轴套 | Bushing | 1 |
| 4-2 | 10051697 | 轴套 | Bushing | 1 |
| 5 | 10008075 | 油线 $\phi 2 \times 165$ | Oil Wick | 1 |
| 6-1 | 10051694 | 轴套 | Bushing | 1 |
| 6-2 | 10051695 | 轴套 | Bushing | 1 |
| 7 | 10011616 | 针杆连接柱 | Needle Bar Bracket | 1 |
| 8 | 10042412 | 螺钉 (M4×10) | Screw (M4×10) | 1 |
| 9 | ***** | 针夹 | Needle Clamp | 1 |
| 10 | 10009255 | 螺钉 (SM1/8"×44) | Screw (SM1/8"×44) | 4 |
| 11 | 10011349 | 针夹过线板 | Thread Retainer Disc Support | 1 |
| 12 | 10011345 | 针夹过线压板 | Needle Thread Retainer Disc | 1 |
| 13 | 10011338 | 弹簧 | Spring | 1 |
| 14 | 10011348 | 螺钉 (SM1/8"×44) | Screw (SM1/8"×44) | 1 |
| 15 | 10011627 | 绷针过线勾 | Top Cover Thread Eyelet | 1 |
| 16 | 10004902 | 机针UY128GBS 11# | Needle | 3 |
| 17 | 10013017 | 针杆曲柄 | Counterweight | 1 |
| 18 | 10011582 | 螺钉 (SM5/16"×24) | Screw (SM5/16"×24) | 2 |
| 19 | 10010953 | 螺钉 (M5×10) | Screw (M5×10) | 1 |
| 20 | 10011622 | 垫圈 | Washer | 1 |
| 21 | 10011629 | 针杆连杆 | Connecting Rod | 1 |
| 22 | 10007397 | 轴承 | Roller Bearing | 1 |
| 23 | 10011175 | 橡胶塞 | Seal Plug | 1 |
| 24 | 10008066 | 油线 $\phi 2.5 \times 60$ | Oil Wick | 1 |
| 25 | 10011169 | 销 | Pin | 1 |
| 26 | 10011619 | 针杆滑块导轨 | Needle Bar Guide | 1 |
| 27 | 10009103 | 螺钉 (M4×16) | Screw (M4×16) | 2 |
| 28 | 10011340 | 针杆滑块 | Slide Block | 1 |
| 29 | 10011165 | 罩板销 | Pin | 1 |
| 30 | 10009074 | 螺钉 (M4×4) | Screw (M4×4) | 1 |
| 31 | 10011173 | 针杆连杆后罩 | Connecting Rod Cover (Rear) | 1 |
| 32 | 10013040 | 螺钉 (M3×6) | Screw (M3×6) | 2 |
| 33 | 10011581 | 针杆连接前罩 | Connecting Rod Cover (Front) | 1 |
| 34 | 10010837 | 螺钉 (M4×5) | Screw (M4×5) | 1 |
| | | | | |

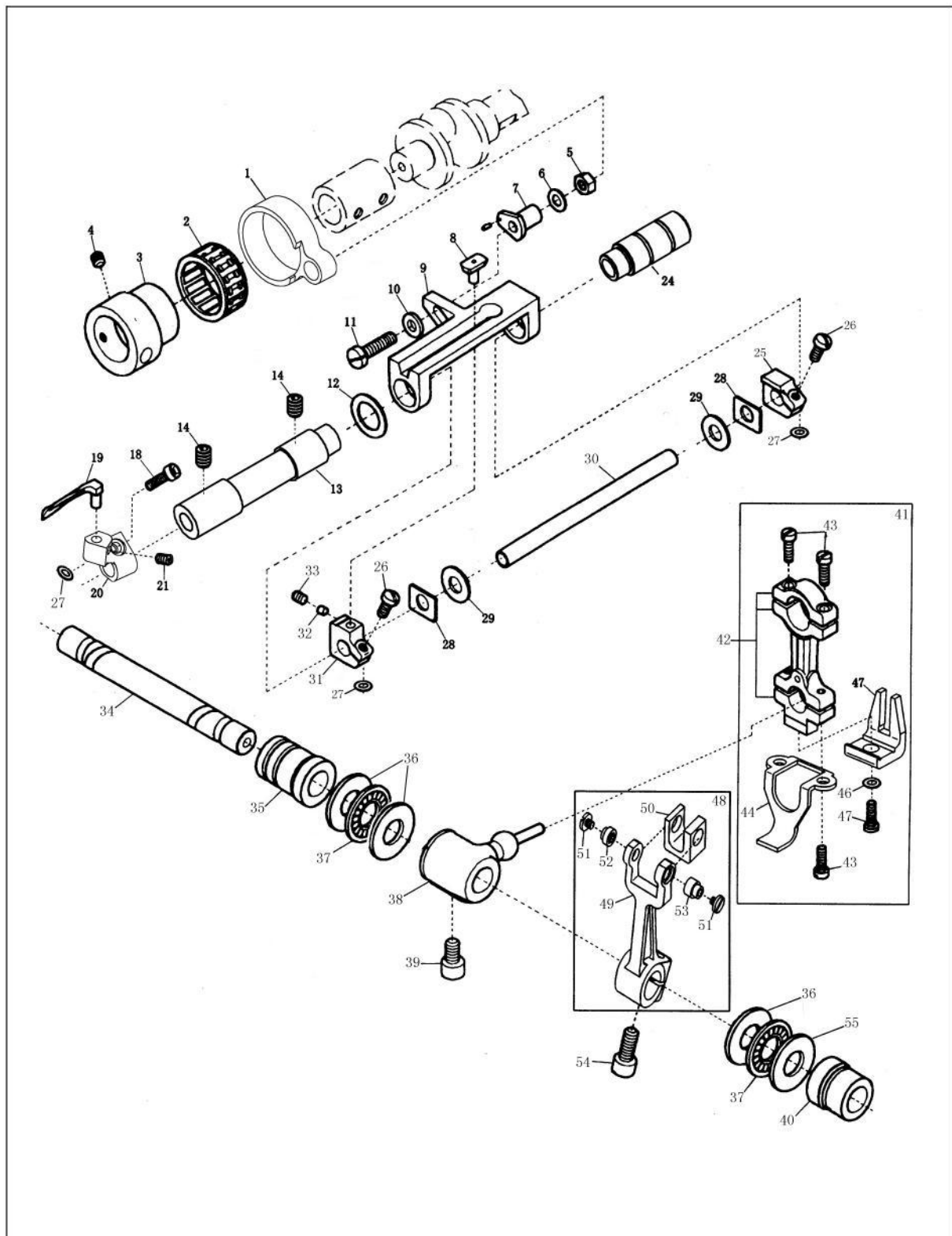
“*” 具体内容参看专用件表



主轴部件

MAIN SHAFT DRIVING MECHANISM

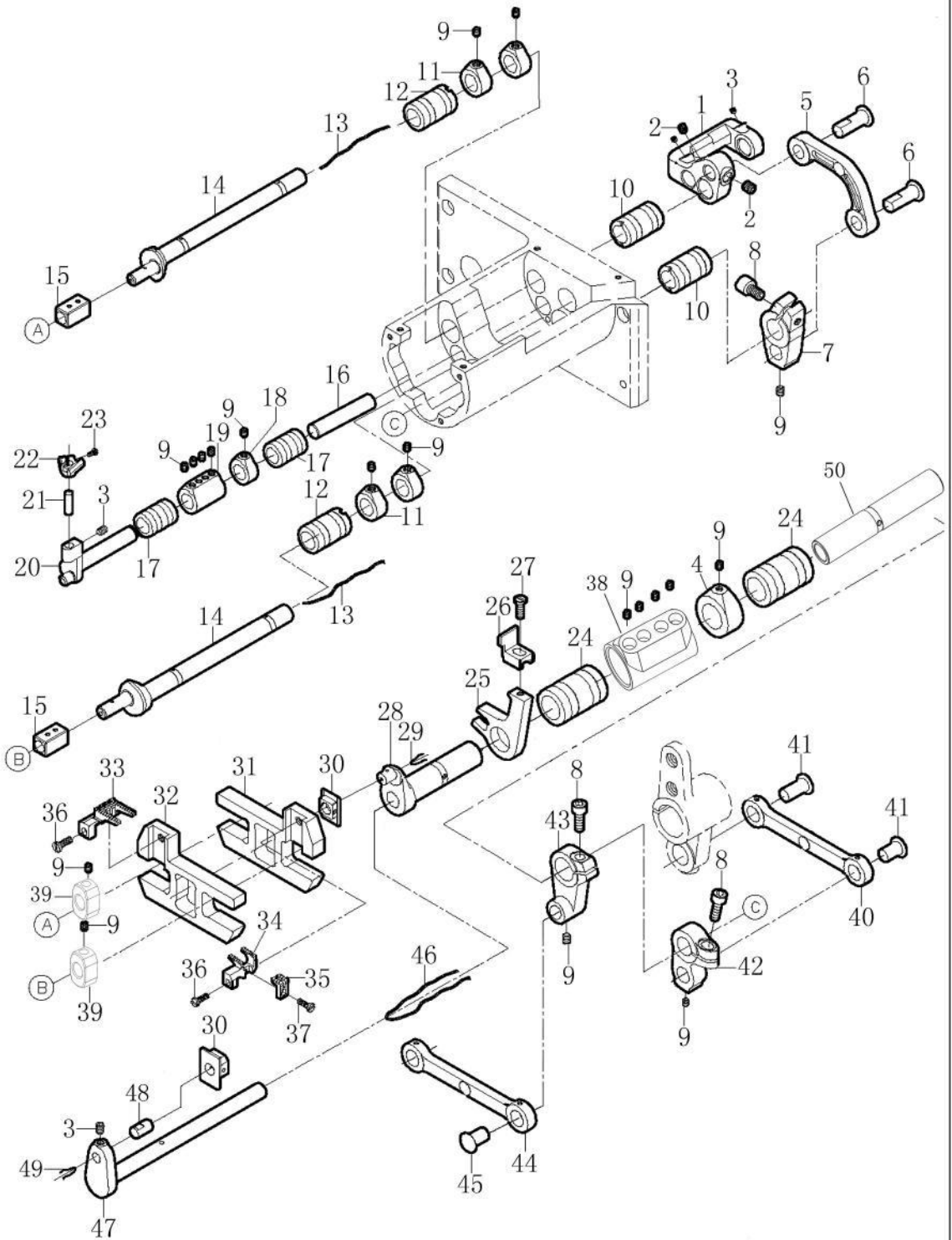
| 序号 No. | 件号 Pars No. | 名称 | Description | 数量 Number |
|--------|----------------|----------------|--|--------------|
| 1 | 10032821 | 小筒三自动直驱马达 | | 1 |
| 2 | 10043235 | 螺钉组件(M5×17) | Screw(M5×17) | 3 |
| 3 | | | | |
| 4 | | | | |
| 5 | 10048389 | 下过线圆弧齿形带 | Timing Belt | 1 |
| 6 | 10029728 | 下轴挡环 | Cover | 1 |
| 7 | 10040329 | 联轴器 | Joint | 1 |
| 8 | 10050053 | 螺钉(M6×0.75) | Screw(M6×0.75) | 2 |
| 9 | 10008265 | 毛刷(φ3×150) | | 2 |
| 10 | 10024755 | 轴承 | Ball Bearing | 1 |
| 11 | 10008907 | 联轴器 | Joint | 1 |
| 12 | 10008075 | 油线(φ2×80) | | 1 |
| 13 | 10012161 | 螺钉(M6×0.75×10) | Screw(M6×0.75×10) | 2 |
| 14 | 10029723 | 下过线时规轮组件 | Looper Thread Take-up Driving Sprocket | 1 |
| 15 | 10011969 | 螺钉(M6×5) | Screw(M6×5) | 10 |
| 16 | 10012307 | 主动时规轮组件 | Looper Thread Take-up Driving Sprocket | 1 |
| 17 | 10030685 | 轴承衬套 | Ball Bearing Collar | 1 |
| 18 | 10012162 | 螺钉(M5×5) | Screw(M5×5) | 4 |
| 19 | 10029408 | 轴承 | Ball Bearing | 1 |
| 20 | 10031137 | 蜗杆 | Oil Pump Driving Worm | 1 |
| 21 | 10054826 | 下轴平衡块 | Counterweight | 1 |
| 22 | 10009074 | 螺钉(M4×4) | Screw(M4×4) | 2 |
| 23 | 10025877 | 轴承 | Ball Bearing | 1 |
| 24 | 10011805 | O形圈 | Seal Ring | 2 |
| 25 | 10029722 | 下轴后节 | | 1 |
| 26 | 10012862 | 下轴联轴器 | Lower Shaft Joint | 1 |
| 27 | 10012859 | 螺钉(M5×3) | Screw(M5×3) | 4 |
| 28 | 10029750 | 下轴前节 | | 1 |
| 29 | 10029751 | 塞子 | | 1 |
| 30 | 10029650 | 轴套 | | 1 |
| 31 | 20003761 | 轴承端盖 | Bearing Cover | 1 |
| 32 | 10009556 | 螺钉(M4×7) | Screw(M4×7) | 3 |
| 33 | 10003277 | 挡圈 | Collar | 1 |
| 34 | 10029725 | 下过线从动时规轮 | Looper Thread Take-up Shaft Sprocket | 1 |
| 35 | 10029727 | 下过线传动轴 | Looper Thread Take-up Shaft | 1 |
| 36 | 10025875 | 轴承 | Ball Bearing | 1 |
| 37 | 10014436 | O形圈 | Seal Ring | 2 |
| 38 | 10014442 | 挡圈 | Collar | 2 |
| 39 | 10014381 | 螺钉(M5×2.6) | Screw(M5×2.6) | 2 |
| 40 | 10025872 | 轴承 | Ball Bearing | 1 |
| 41 | 10025873 | 轴承 | Ball Bearing | 1 |
| 42 | 10010475 | 打线凸轮组件 | Looper Thread Take-up | 1 |
| 43 | 10014417 | 下过线座 | Thread Take-up Eyelet Holder | 1 |
| 44 | 10014411 | 螺钉(M4) | Screw(M4) | 1 |
| 45 | 10009470 | 垫圈 | Washer | 1 |
| 46 | 10014410 | 左下过线 | Thread Take-up Eyelet(Left) | 1 |
| 47 | 10003123 | 垫圈 | Washer | 2 |
| 48 | 10014413 | 螺钉(M2.5×4) | Screw(M2.5×4) | 2 |
| 49 | 10014414 | 下过线板 | Looper Thread Guide | 1 |
| 50 | 10012728 | 螺钉(M3.5×4) | Screw(M3.5×4) | 2 |
| 51 | 10004865 | 螺母 | Nut | 1 |
| 52 | 10004843 | 弹簧 | Spring | 1 |
| 53 | 10004866 | 绷线过线小夹线板 | Looper Thread Supplementary Tension Disc | 2 |
| 54 | 10004864 | 螺钉 | Screw | 1 |
| 55 | 10014412 | 右下过线 | Thread Take-up Eyelet(Right) | 1 |
| 56 | 10031155 | 下过线铰链支架组件 | Thread Take-up Eyelet Bracket | 1 |
| 57 | 10002954 | 垫圈 | Washer | 1 |
| 58 | 10011794 | 螺钉(M4×10) | Screw(M4×10) | 1 |
| 59 | 10012868 | 弹簧 | Spring | 1 |



弯针部件

LOOPER DRIVING MECHANISM

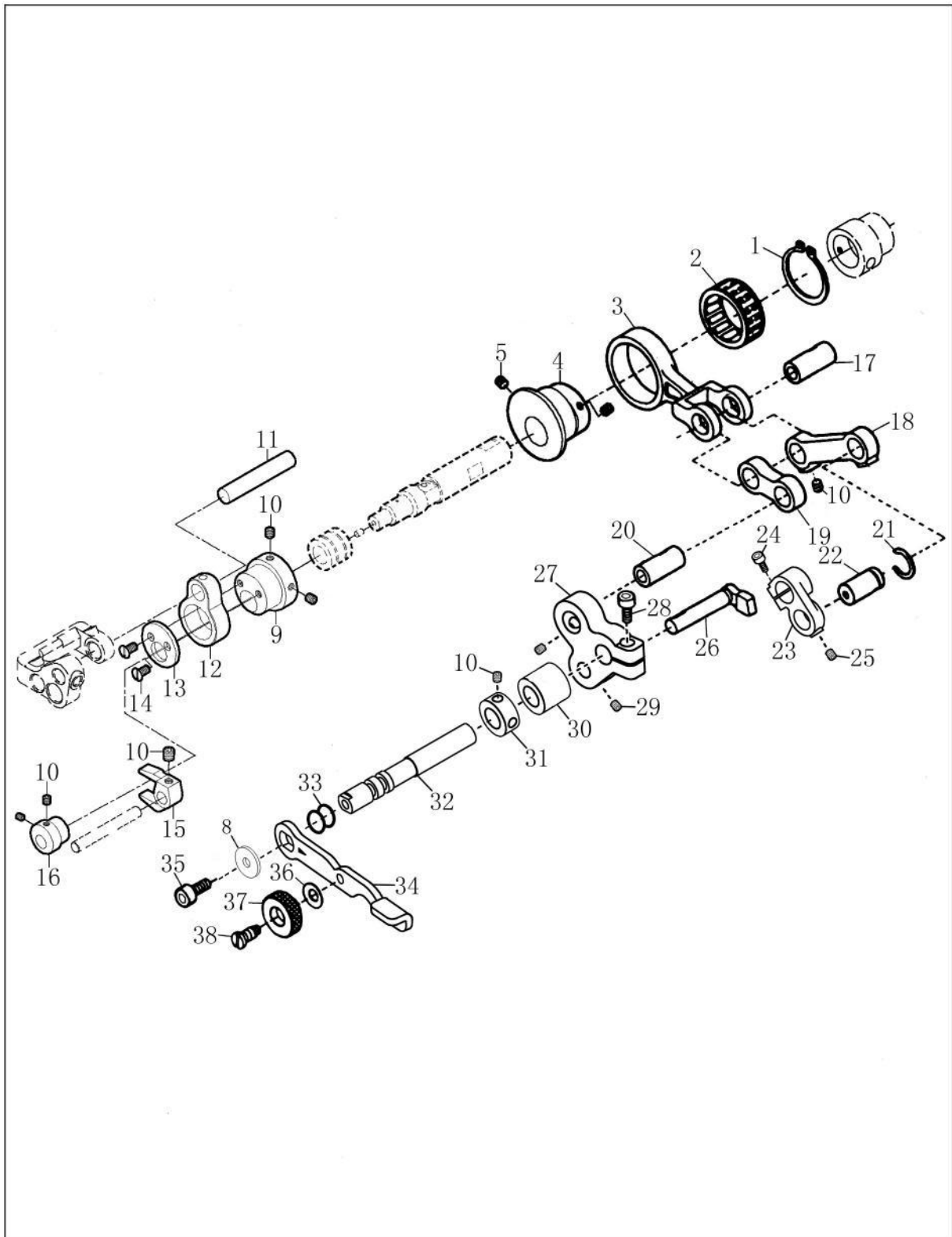
| 序号 No. | 件号 Pars No. | 名称 | Description | 数量 Number |
|-----------|----------------|-------------|-------------------------------------|--------------|
| 1 | 10029730 | 弯针凸轮连杆 | Looper Rocker Connecting Rod | 1 |
| 2 | 10007406 | 轴承 | Roller Bearing | 1 |
| 3 | 10014466 | 弯针凸轮 | Looper Rocker Regulating Eccentric | 1 |
| 4 | 10012162 | 螺钉 (M5×5) | Screw (M5×5) | 2 |
| 5 | 10002952 | 螺母 | Nut | 1 |
| 6 | 10010459 | 垫圈 | Washer | 1 |
| 7 | 10031157 | 弯针调节柱组件 | Looper Rocker Adjusting Pin | 1 |
| 8 | 10012741 | 弯针导架 | Slider | 1 |
| 9 | 10029729 | 弯针传动座 | Slider Holder | 1 |
| 10 | 10010466 | 垫圈 | Washer | 1 |
| 11 | 10009623 | 螺钉 (M5×24) | Screw (M5×24) | 1 |
| 12 | 10000434 | 垫圈 | Washer | 1 |
| 13 | 10029731 | 轴套 | Bushing | 1 |
| 14 | 10009187 | 螺钉 (M6×8) | Screw (M6×8) | 2 |
| 18 | 10042412 | 螺钉 (M4×10) | Screw (M4×10) | 1 |
| 19 | 10012780 | 弯针 | Looper | 1 |
| 20 | 10029788 | 弯针座 | Looper Holder | 1 |
| 21 | 10041330 | 螺钉 (M4×4) | Screw (M4×4) | 1 |
| 24 | 10029651 | 轴套 | Bushing | 1 |
| 25 | 10012745 | 弯针轴右挡块 | Rocker Arm, Holder | 1 |
| 26 | 10013178 | 螺钉 (M4×12) | Screw (M4×12) | 2 |
| 27 | 10012756 | 垫圈 | Washer | 3 |
| 28 | 10012786 | 垫圈 | Washer | 2 |
| 29 | 10012784 | 垫圈 | Washer | 2 |
| 30 | 10027629 | 弯针轴 | Looper Bar | 1 |
| 31 | 10014473 | 弯针轴左挡块 | Slider Holder | 1 |
| 32 | 10012751 | 弯针导架螺钉压块 | Slider Presser | 1 |
| 33 | 10009074 | 螺钉 (M4×4) | Screw (M4×4) | 1 |
| 34 | 10014369 | 弯针横轴组件 | Looper Shaft | 1 |
| 35 | 10012411 | 轴套 | Bushing | 1 |
| 36 | 10012782 | 垫圈 | Washer | 3 |
| 37 | 10007849 | 轴承 | Roller Bearing | 2 |
| 38 | 10005592 | 弯针球曲柄 | Looper Driving Lever | 1 |
| 39 | 10012024 | 螺钉 (M6×15) | Screw (M6×15) | 1 |
| 40 | 10012405 | 轴套 | Bushing | 1 |
| 41 | 10005594 | 弯针连杆组件 | Looper Connecting Rod, Complete Set | 1 |
| 42 | 10005591 | 弯针连杆 | Looper Connecting Rod | 1 |
| 43 | 10005593 | 螺钉 (M4×12) | Screw (M4×12) | 4 |
| 44 | 10014437 | 连杆打油板 | Oil Splasher | 1 |
| 45 | 10004829 | 叉板 | Guide Fork | 1 |
| 46 | 10005537 | 垫圈 | Washer | 1 |
| 47 | 10009869 | 螺钉 (M5×9) | Screw (M5×9) | 1 |
| 48 | 10010255 | 弯针横轴摆杆组件 | Loop Rocker Arm, Complete Set | 1 |
| 49 | 10004020 | 弯针横轴摆杆 | Loop Rocker Arm | 1 |
| 50 | 10004029 | 弯针横轴摆杆滑块 | Slider Block | 1 |
| 51 | 10010217 | 螺钉 (M3×3.3) | Screw (M3×3.3) | 2 |
| 52 | 10010248 | 弯针横轴摆杆滑块短销 | Pin | 1 |
| 53 | 10010246 | 弯针横轴摆杆滑块长销 | Pin | 1 |
| 54 | 10012024 | 螺钉 (M6×15) | Screw (M6×15) | 1 |
| 55 | 10040918 | 垫圈 | Washer | 3 |



抬牙送布部件

FEED LIFT DRIVING MECHANISM

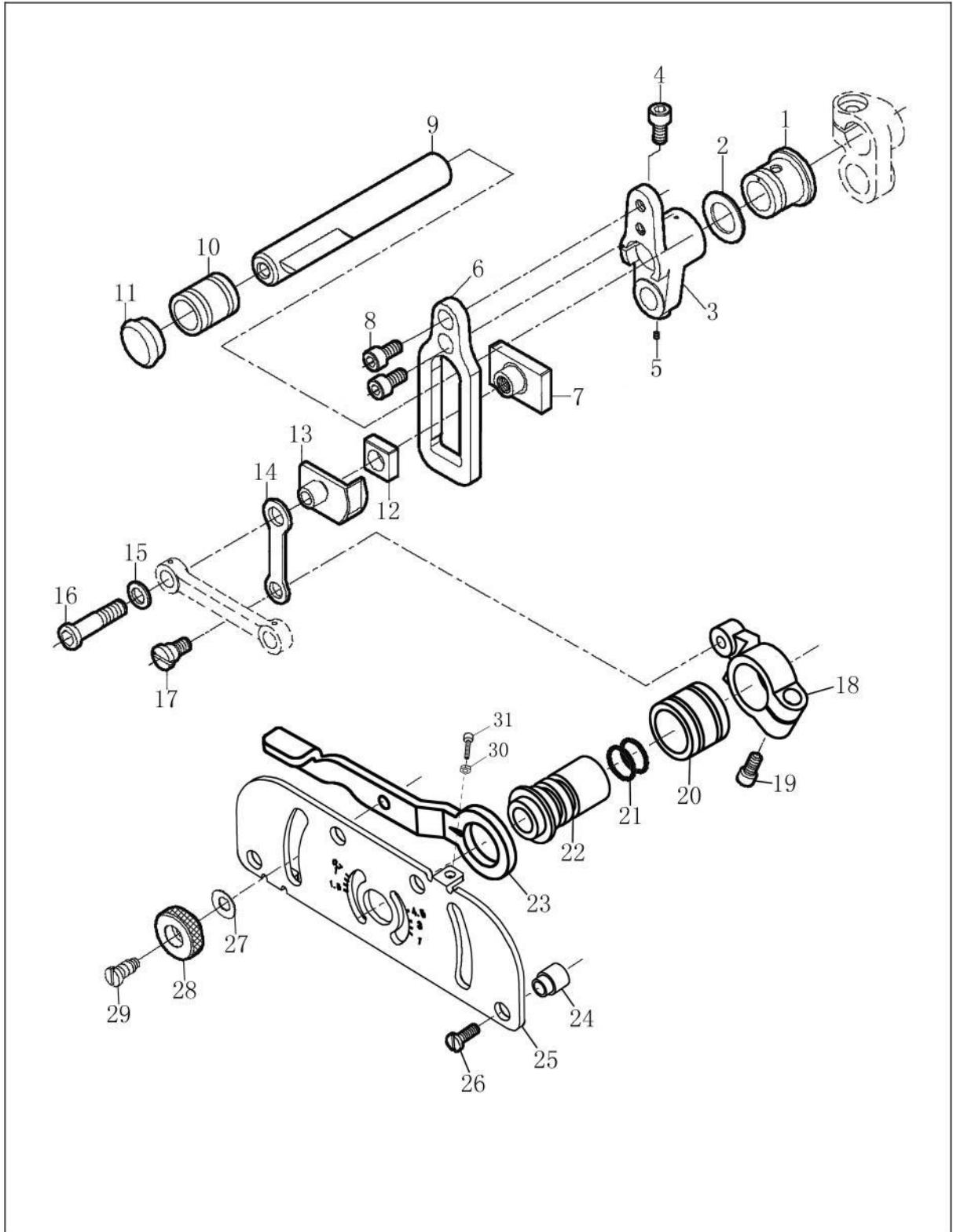
| 序号 No. | 件号 Pars No. | 名称 | Description | 数量 Number |
|-----------|----------------|---------------------|------------------------------------|--------------|
| 1 | 10029711 | 抬牙座 | Feed Driving Key | 1 |
| 2 | 10012162 | 螺钉 (M5×5) | Screw (M5×5) | 2 |
| 3 | 10013019 | 螺钉 (M3×4) | Screw (M3×4) | 5 |
| 4 | 10029697 | 挡圈 | Collar | 1 |
| 5 | 10029713 | 抬牙座连杆 | Feed Driving Key Lever Rod | 1 |
| 6 | 10029712 | 抬牙座连杆销 | Feed Driving Key Lever Rod Pin | 2 |
| 7 | 10029714 | 曲柄 | Lever | 1 |
| 8 | 10012752 | 螺钉 (M4×10) | Screw (M4×10) | 3 |
| 9 | 10009074 | 螺钉 (M4×4) | Screw (M4×4) | 21 |
| 10 | 10029644 | 轴套 | Bushing | 2 |
| 11 | 10029696 | 挡圈 | Collar | 4 |
| 12 | 10029642 | 轴套 | Bushing | 2 |
| 13 | 10008075 | 油线 | (Φ2x260mm) | 2 |
| 14 | 10029704 | 抬牙滑块传动轴 | Feed Lift Block Shaft | 2 |
| 15 | 10029688 | 牙架滑块 | Feed Lift Block | 2 |
| 16 | 10029707 | 前护针传动后轴 | Needle Guard (Front) Holder Shaft | 1 |
| 17 | 10029643 | 轴套 | Bushing | 2 |
| 18 | 10029695 | 挡圈 | Collar | 1 |
| 19 | 10029698 | 联轴器 | Joint | 1 |
| 20 | 10029705 | 前护针传动轴 | Needle Guard (Front) Holder | 1 |
| 21 | 10029706 | 前护针传动轴销 | Needle Guard (Front) Holder Pin | 1 |
| 22 | 10029708 | 前护针 | Needle Guard (Front) | 1 |
| 23 | 10012738 | 螺钉 (M3.5×6.5) | Screw (M3.5×6.5) | 1 |
| 24 | 10029645 | 轴套 | Bushing | 2 |
| 25 | 10029709 | 后护针座 | Needle Guard (Behind) Key | 1 |
| 26 | 10029710 | 后护针 | Needle Guard (Behind) | 1 |
| 27 | 10009676 | 螺钉 (M2.5×6) | Screw (M2.5×6) | 1 |
| 28 | 10041332 | 差动送料轴 | Differential Feed Driving Shaft | 1 |
| 29 | 10008075 | 油线 | (Φ2x15mm) | 1 |
| 30 | 10029694 | 牙架传动块 | Feed Bar Driving Block | 2 |
| 31 | 10029687 | 差动牙架 | Differential Feed Bar | 1 |
| 32 | 10029686 | 送布牙架 | Main Feed Bar | 1 |
| 33 | ***** | 送料牙 | Main Feed Dog | 1 |
| 34 | ***** | 主差动牙 | Main Differential Feed Dog | 1 |
| 35 | ***** | 副差动牙 | Secondary Differential Feed Dog | 1 |
| 36 | 10011068 | 螺钉 (SM1/8"×44×7.4) | Screw (SM1/8"×44×7.4) | 2 |
| 37 | 10004343 | 螺钉 (SM3/32"×56×4.8) | Screw (SSM3/32"×56×4.8) | 1 |
| 38 | 10041333 | 联轴器 | Joint | 1 |
| 39 | 10029699 | 牙架前滑块挡片 | Feed Lift Block Collar (Behind) | 2 |
| 40 | 10029717 | 送料曲柄连杆 | Main Feed Rocker Lever Rod | 1 |
| 41 | 10029716 | 送料轴曲柄销 | Main Feed Rocker Lever Pin | 2 |
| 42 | 10029715 | 送料轴曲柄 | Feed Rocker Lever | 1 |
| 43 | 10029718 | 差动送料轴曲柄 | Differential Feed Rocker Lever | 1 |
| 44 | 10029739 | 差动送料轴曲柄连杆 | Differential Feed Rocker Lever Rod | 1 |
| 45 | 10029719 | 差动送料轴曲柄销 | Differential Feed Rocker Lever Pin | 1 |
| 46 | 10008092 | 油线 | (Φ3x220mm) | 1 |
| 47 | 10029701 | 送料轴 | Main Feed Shaft | 1 |
| 48 | 10029702 | 送料轴销 | Main Feed Shaft Pin | 1 |
| 49 | 10008075 | 油线 | (Φ2x26mm) | 1 |
| 50 | 10041331 | 差动送料轴2 | | 1 |
| 51 | | | | |
| 52 | | | | |
| 53 | | | | |



针距调节部件

FEED DRIVING CONTROL MECHANISM

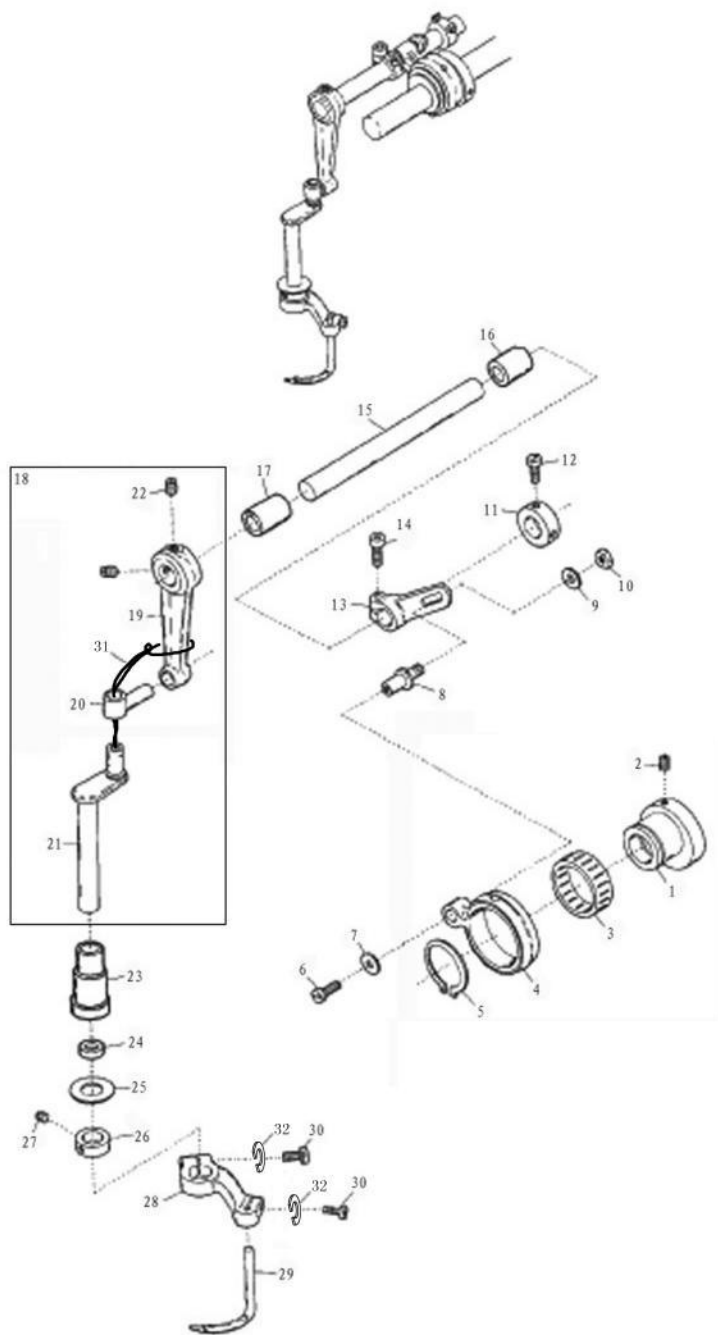
| 序号 No. | 件号 Pars No. | 名称 | Description | 数量 Number |
|-----------|----------------|--------------------|--|--------------|
| 1 | 10003238 | 挡圈 | Collar | 2 |
| 2 | 10007371 | 轴承 | Roller Bearing | 2 |
| 3 | 10029762 | 连杆 | Rod | 1 |
| 4 | 10029761 | 送料偏心套 | Feed Driving Eccentric | 2 |
| 5 | 10012162 | 螺钉 (M5×5) | Screw (M5×5) | 2 |
| 6 | | | | |
| 7 | | | | |
| 8 | 10010111 | 垫圈 | Washer | 1 |
| 9 | 10029752 | 抬牙偏心套 | Feed Lift Eccentric | 1 |
| 10 | 10009074 | 螺钉 (M4×4) | Screw (M4×4) | 7 |
| 11 | 10029755 | 抬牙偏心套连杆轴 | Feed Lift Eccentric Connecting Rod Shaft | 1 |
| 12 | 10029753 | 抬牙偏心套连杆 | Feed Lift Eccentric Connecting Rod | 1 |
| 13 | 10029754 | 挡片 | Collar | 1 |
| 14 | 10011727 | 螺钉 (SM1/8"×44×5.5) | Screw (SM1/8"×44×5.5) | 2 |
| 15 | 10029757 | 护针传动牙叉 | Needle Guard Lever | 1 |
| 16 | 10029756 | 前护针偏心套 | Needle Guard (Front) Eccentric | 1 |
| 17 | 10029765 | 差动器连杆销 | Differential Feed Connecting Rod Pin | 1 |
| 18 | 10012783 | 差动器连杆长连杆 | Differential Feed Connecting Long Rod | 1 |
| 19 | 10012779 | 差动器连杆短连杆 | Differential Feed Connecting Short Rod | 1 |
| 20 | 10029760 | 针距调节座销 | Feed Connecting Key Pin | 1 |
| 21 | 10013248 | 卡簧 | Collar | 1 |
| 22 | 10029764 | 销 | Pin | 1 |
| 23 | 10029763 | 送料连杆曲柄 | Main Feed Bar Driving Connection Lever | 1 |
| 24 | 10010958 | 螺钉 (M5×14) | Screw (M5×14) | 1 |
| 25 | 10013019 | 螺钉 (M3×4) | Screw (M3×4) | 1 |
| 26 | 10029759 | 限位块 | Control Bracker | 1 |
| 27 | 10029758 | 针距调节座 | Feed Connecting Key | 1 |
| 28 | 10012024 | 螺钉 (M6×0.75×15) | Screw (M6×0.75×15) | 1 |
| 29 | 10012162 | 螺钉 (M5×5) | Screw (M5×5) | 1 |
| 30 | 10029648 | 轴套 | Bushing | 1 |
| 31 | 10029745 | 挡圈 | | 1 |
| 32 | 10029744 | 针距调节轴 | Feed Connecting Shaft | 1 |
| 33 | 10010534 | O形圈 (φ9.2×φ2.4) | O-Ring (φ9.2×φ2.4) | 2 |
| 34 | 10029743 | 针距调节拉杆 | Feed Connecting Bar | 1 |
| 35 | 10014441 | 螺钉 (M4×6) | Screw (M4×6) | 1 |
| 36 | 10010861 | 垫圈 | Washer | 1 |
| 37 | 10010491 | 针距调节锁紧螺母 | Nut | 1 |
| 38 | 10010856 | 螺钉 | Screw | 1 |
| 39 | 10013590 | 螺钉 (SM11/64"×40) | Screw (SM11/64"×40) | 1 |
| | | | | |
| | | | | |



差动调节部件

DIFFERENTIAL FEED DRIVING CONTROL MECHANISM

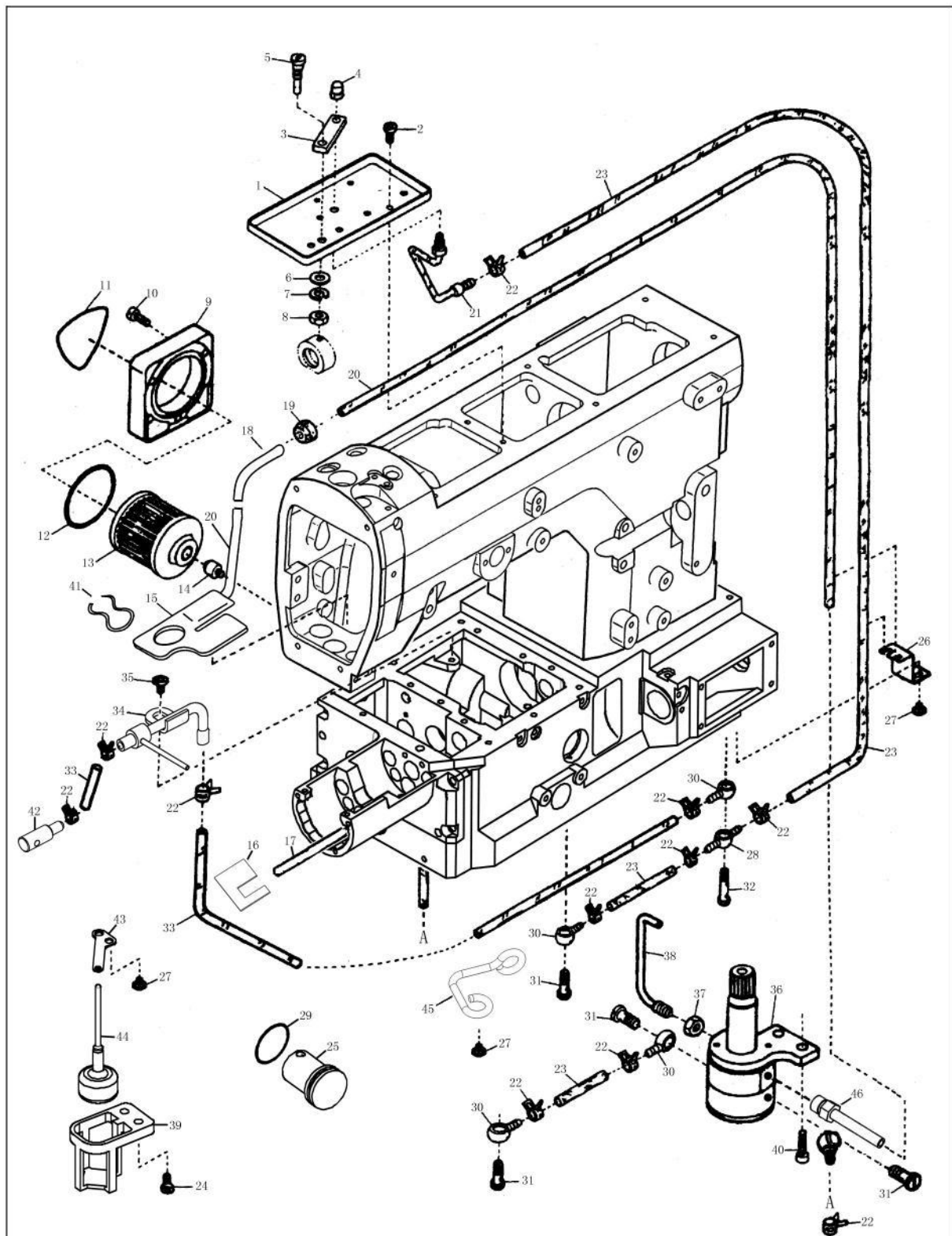
| 序号 No. | 件号 Pars No. | 名称 | Description | 数量 Number |
|-----------|----------------|------------------|--|--------------|
| 1 | 10029647 | 轴套 | Bushing | 1 |
| 2 | 10000434 | 垫圈 | Washer | 1 |
| 3 | 10029733 | 差动调节固定架 | Differential Feed Adjusting Key Holder | 1 |
| 4 | 10010958 | 螺钉 (M5×14) | Screw (M5×14) | 1 |
| 5 | 10031152 | 螺钉 (M3.5×4) | Screw (M3.5×4) | 1 |
| 6 | 10029734 | 差动调节架 | Differential Feed Adjusting Key | 1 |
| 7 | 10029737 | 差动滑块座 | Differential Feed Block Key | 1 |
| 8 | 10012752 | 螺钉 (M4×10) | Screw (M4×10) | 2 |
| 9 | 10029732 | 送料铰链轴 | Main Feed Rocker Shaft | 1 |
| 10 | 10029646 | 轴套 | Bushing | 1 |
| 11 | 10029684 | 油封 | Seal Pulg | 1 |
| 12 | 10029735 | 差动调节滑块 | Differential Feed Block | 1 |
| 13 | 10029736 | 差动滑块架 | Differential Feed Block Holder | 1 |
| 14 | 10029738 | 拉杆 | Rod | 1 |
| 15 | 10012836 | 垫圈 (4.6×9.7×0.8) | Washer (4.6×9.7×0.8) | 1 |
| 16 | 10012861 | 螺钉 (SM11/64"×40) | Screw (SM11/64"×40) | 2 |
| 17 | 10003496 | 螺钉 | Screw | 1 |
| 18 | 10029746 | 差动调节曲柄 | Differential Feed Rocker Lever | 1 |
| 19 | 10002082 | 螺钉 (M6×15) | Screw (M6×15) | 1 |
| 20 | 10029649 | 轴套 | Bushing | 1 |
| 21 | 10009219 | O型圈 | O-Ring | 2 |
| 22 | 10029742 | 轴套 | Bushing | 1 |
| 23 | 10029741 | 差动调节拉杆 | Differential Feed Adjusting Lever | 1 |
| 24 | 10029749 | 指示板销 | Indication Plate Pin | 4 |
| 25 | 10029748 | 指示板 | Indication Plate | 1 |
| 26 | 10010688 | 螺钉 (M4×16) | Screw (M4×16) | 4 |
| 27 | 10010861 | 垫圈 | Washer | 1 |
| 28 | 10010491 | 螺母 | Nut | 1 |
| 29 | 10010856 | 螺钉 | Screw | 1 |
| 30 | 10003025 | 螺母 | Nut | 1 |
| 31 | 10039653 | 螺钉 (M3×12) | Screw (M3×12) | 1 |



绷针部件

SPREADER MECHANISM

| 序号 No. | 件号 Pars No. | 名称 | Description | 数量 Number |
|-----------|----------------|------------------|--------------------------------------|--------------|
| 1 | 10011074 | 绷针偏心轮 | Eccentric | 1 |
| 2 | 10012162 | 螺钉 (M5×5) | Screw (M5×5) | 2 |
| 3 | 10007400 | 轴承 | Roller Bearing | 1 |
| 4 | 10011071 | 偏心轮连杆 | Connecting Rod | 1 |
| 5 | 10007935 | 挡圈 | Collar | 1 |
| 6 | 10011005 | 螺钉 (M4×9) | Screw (M4×9) | 1 |
| 7 | 10011055 | 垫圈 | Washer | 1 |
| 8 | 10011053 | 调整曲柄销 | Pin | 1 |
| 9 | 10012393 | 垫圈 | Washer | 1 |
| 10 | 10003084 | 螺母 | Nut | 1 |
| 11 | 10013016 | 挡圈 | Collar | 1 |
| 12 | 10013015 | 螺钉 (SM11/64"×40) | Screw (SM11/64"×40) | 1 |
| 13 | 10011073 | 绷针调整曲柄 | Adjusting Lever | 1 |
| 14 | 10009008 | 螺钉 (M6×16) | Screw (M6×16) | 1 |
| 15 | 10011658 | 绷针轴 | Driving Shaft | 1 |
| 16 | 10011116 | 轴套 | Bushing | 1 |
| 17 | 10011106 | 轴套 | Bushing | 1 |
| 18 | 10007588 | 绷针曲柄轴连杆组件 | Needle Bar Rocking Arm, Complete Set | 1 |
| 19 | 10011666 | 绷针轴连杆 | Rocking Arm | 1 |
| 20 | 10011651 | 绷针连接柱 | Rocking Pin | 1 |
| 21 | 10011656 | 绷针曲柄轴 | Spreader Bar | 1 |
| 22 | 10010907 | 螺钉 (M6×6) | Screw (M6×6) | 2 |
| 23 | 10011110 | 轴套 | Bushing | 1 |
| 24 | 10011657 | 油封 | Oil Seal | 1 |
| 25 | 10011665 | 垫圈 | Washer | 1 |
| 26 | 10011722 | 挡圈 | Collar | 1 |
| 27 | 10011887 | 螺钉 (SM9/64"×40) | Screw (SM9/64"×40) | 2 |
| 28 | 10011659 | 绷针摆动曲柄 | Spreader Holder | 1 |
| 29 | 10011662 | 绷针 | Spreader | 1 |
| 30 | 10009037 | 螺钉 (M4×12) | Screw (M4×12) | 2 |
| 31 | 10008069 | 油线 (φ2×100) | | 1 |
| 32 | 10012756 | 4垫圈 | Washer | 2 |



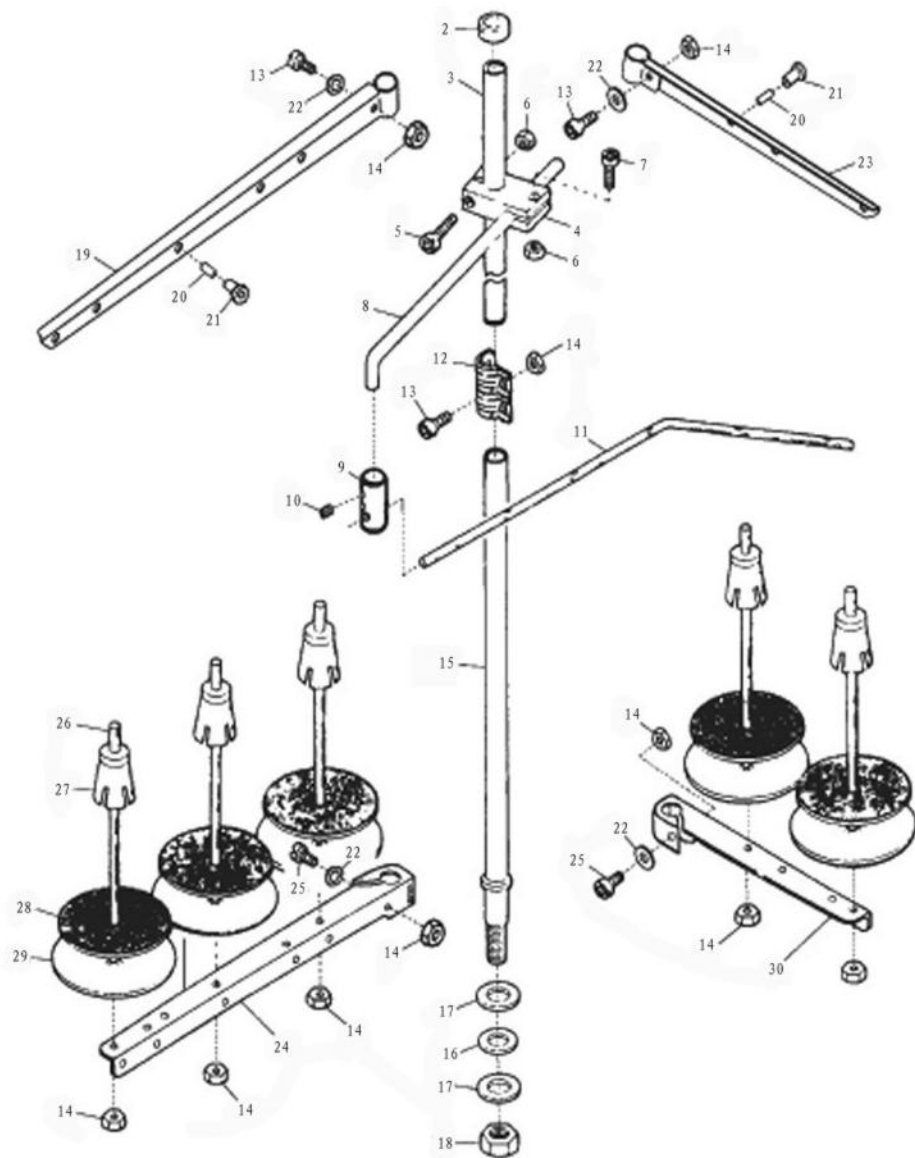
润滑部件

LUBRICATING MECHANISM

| 序号 No. | 件号 Pars No. | 名称 | Description | 数量 Number |
|-----------|----------------|---------------------|--|--------------|
| 1 | 10011465 | 上轴喷油分布盘 | Oil Receiver | 1 |
| 2 | 10010837 | 螺钉 (M4×5) | Screw (M4×5) | 2 |
| 3 | 10011468 | 上轴两孔通油板 | Lubricant Guiding Block | 1 |
| 4 | 10011467 | 上轴喷油管嘴 | Top Nozzle | 1 |
| 5 | 10011464 | 螺钉 (M5) | Screw (M5) | 1 |
| 6 | 10011653 | 垫圈 | Washer | 1 |
| 7 | 10005537 | 垫圈 | Washer | 1 |
| 8 | 10009467 | 螺母 | Nut | 1 |
| 9 | 20003647 | 滤油器盖 | Oil Filter Cap | 1 |
| 10 | 10012710 | 螺钉 (M4×14) | Screw (M4×14) | 3 |
| 11 | 10012709 | 滤油器盖标贴 | | 1 |
| 12 | 10003793 | O形圈 | O-Ring | 1 |
| 13 | 10043169 | 滤油器 | Oil Filter | 1 |
| 14 | 10012104 | 螺钉 (M10×7) | Screw (M10×7) | 1 |
| 15 | 10012328 | 回油毡 | Felt | 1 |
| 16 | 10029769 | 回油毡 | Felt | 1 |
| 17 | 10029766 | 回油管组件 | | 1 |
| 18 | 10012331 | 回油管 | Suction Pipe | 1 |
| 19 | 10012092 | 橡胶塞 | Seal Pulg | 1 |
| 20 | 10007795 | 油管 (φ 3.5× φ 5×510) | Oil Tube (φ 3.5× φ 5×510) | 1 |
| 21 | 10011461 | 上轴喷油管组件 | Oil Pipe Unit | 1 |
| 22 | 10011471 | 进油管油管夹 | Oil Tube Clam | 12 |
| 23 | 10007796 | 油管 (φ 4× φ 6×400) | Oil Tube | 1 |
| 24 | 10013178 | 螺钉 (M4×12) | Screw (M4×12) | 2 |
| 25 | 10029776 | 指示窗 | Oil Scase Aggregate | 1 |
| 26 | 10012808 | 油管挡板 | Oil Tube Stay | 1 |
| 27 | 10014441 | 螺钉 (M4×6) | Screw (M4×6) | 5 |
| 28 | 10012095 | 油泵进油分流管接头 | Oil Tube Joint, Two Way | 1 |
| 29 | 10008980 | O型圈 | O-Ring | 1 |
| 30 | 10012103 | 管接头 | Oil Tube Joint, One Way | 5 |
| 31 | 10012084 | 螺钉 (SM1/4"×40) | Screw (SM1/4"×40) | 4 |
| 32 | 10012102 | 螺钉 (SM1/4"×40) | Screw (SM1/4"×40) | 1 |
| 33 | 10007796 | 油管 φ 4× φ 6×245 | Oil Tube φ 4× φ 6×245 | 1 |
| 34 | 10029771 | 底座喷油管组件 | Lower Shaft Oiling Shower | 1 |
| 35 | 10014441 | 螺钉 (M4×6) | Screw (M4×6) | 3 |
| 36 | 10031138 | 齿轮油泵组件 | Oil Pump | 1 |
| 37 | 10012107 | 螺母 | Nut | 1 |
| 38 | 10011460 | 回油出油管组件 | Oil Nozzle For Worm Gear | 1 |
| 39 | 10008978 | 油标座 | Stand Of Oil Scase | 1 |
| 40 | 10011313 | 螺钉 (M6×12) | Screw (M6×12) | 2 |
| 41 | 10012332 | 回油毡夹 | | 1 |
| 42 | 10029770 | 油管接头 | Oil Tube Joint | 1 |
| 43 | 10029778 | 油标固定板 | Oil Scase , Complete Set Support Plate | 1 |
| 44 | 10029807 | 油标组件 | Oil Scase , Complete Set | 1 |
| 45 | 10013277 | 喷油槽供油管架 | | 1 |
| 46 | 10014067 | 回油管接头组件 | | 1 |

| 序号 No. | 件号 Pars No. | 名称 | Description | 数量 Number |
|-----------|----------------|------------------|------------------------------|--------------|
| 1 | 10011311 | 机头罩☆ | Machine Cover | 1 |
| 2 | 10004882 | 油壶 | Jerrican | 1 |
| 3 | 10054706 | 小油壶组件 | Oiler | 1 |
| 4 | 10008932 | 漏斗 | Funnel | 1 |
| 5 | 10011155 | 硅油瓶 | HP Oiler | 1 |
| 6 | 10014185 | 扳手6# | Spanner(6#) | 1 |
| 7 | 10014122 | 扳手7# | Spanner(7#) | 1 |
| 8 | 10014186 | 扳手8# | Spanner(8#) | 1 |
| 9 | 10009684 | 内六角扳手1.5# | Hexagonal Wrench(1.5#) | 1 |
| 10 | 10009683 | 内六角扳手2# | Hexagonal Wrench(2#) | 1 |
| 11 | 10009686 | 内六角扳手2.5# | Hexagonal Wrench(2.5#) | 1 |
| 12 | 10009685 | 内六角扳手3# | Hexagonal Wrench(3#) | 1 |
| 13 | 10009687 | 内六角扳手4# | Hexagonal Wrench(4#) | 1 |
| 14 | 10009689 | 内六角扳手5# | Hexagonal Wrench(5#) | 1 |
| 15 | 10009688 | 内六角扳手6# | Hexagonal Wrench(6#) | 1 |
| 16 | 10009270 | 内六角开刀 | Hexagonal Screwdriver | 1 |
| 17 | 10014159 | 平口开刀110 | Screwdriver | 1 |
| 18 | 10013982 | 平口开刀220 | Screwdriver | 1 |
| 19 | 10004247 | 镊子组件 | Thread Tweezers | 1 |
| 20 | 10029787 | 折下摆固定座销 | | 1 |
| 21 | 10011360 | 踏板链条 | Chain | 1 |
| 22 | 10014203 | 链勾 | Hook | 2 |
| 23 | 10043169 | 滤油器组件 | Oil Filter | 1 |
| 24 | 10039458 | 使用说明书零件手册☆ | Explain Book | 1 |
| 25 | 20003666 | 固定板 | Instead Plate | 2 |
| 26 | 10011312 | 固定板连接柱 | Instead Plate Connecting Pin | 4 |
| 27 | 10011361 | 螺钉(M8×50) | Screw(M8×50) | 4 |
| 28 | 10009273 | 垫圈 | Washer | 4 |
| 29 | 10006282 | 垫圈(φ8) | Washer(φ8) | 4 |
| 30 | 10009272 | 垫圈(φ9×φ24×3) | Washer(φ9×φ24×3) | 16 |
| 31 | 10011315 | 防震垫 | Washer | 4 |
| 32 | 10011306 | 螺钉(M5×7) | Screw(M5×7) | 4 |
| 33 | 10011359 | 台板防震垫 | Washer | 4 |
| 34 | 10012028 | 螺钉(M5×8) | Screw(M5×8) | 2 |
| 35 | 10011309 | 挡链板 | Prevent Chain Plate | 1 |
| 36 | 10029786 | 折下摆固定座 | | 1 |
| 37 | 10009074 | 螺钉(M4×4) | Screw(M4×4) | 1 |
| 38 | 10011794 | 螺钉(M4×10) | Screw(M4×10) | 1 |
| 39 | 10013019 | 螺钉(M3×4) | Screw(M3×4) | 1 |
| 40 | 10029785 | 右折下摆 | | 1 |
| 41 | 10029784 | 左折下摆 | | 1 |
| 42 | 10029781 | 右倒骨(一) | | 1 |
| 43 | 10029780 | 左倒骨(一) | | 1 |
| 44 | 10002917 | 螺钉(M2.5×6) | Screw(M2.5×6) | 2 |
| 45 | 10004956 | 五线线架部件 | Thread Stand | 1 |
| 46 | 10012704 | 螺钉(M6×57) | Screw(M6×57) | 4 |
| 47 | 10012701 | 垫圈(φ6.5×φ16×2) | Washer(φ6.5×φ16×2) | 8 |
| 48 | 10002994 | 螺母(M6) | Nut(M6) | 4 |
| 49 | 10003077 | 垫圈(φ6) | Washer(φ6) | 4 |
| 50 | 10008323 | 螺钉(ST4.2×20-C-H) | Screw(ST4.2×20-C-H) | 2 |
| 51 | 10050369 | 机针UY128GAS 11# | Needle(UY128GAS 11#) | 3 |
| 52 | 10029782 | 左倒骨(二) | | 1 |
| 53 | 10029783 | 右倒骨(二) | | 1 |
| 54 | 10002915 | 螺钉(M2.5×4) | Screw(M2.5×4) | 2 |

1



线架

THREAD STAND

| 序号 No. | 件号 Pars No. | 名称 | Description | 数量 Number |
|-----------|----------------|------------|-----------------------|--------------|
| 1 | 10004956 | 五线线架部件 | Thread Stand | 1 |
| 2 | 10004282 | 线架上撑管套 | Column Cop | 2 |
| 3 | 10004293 | 线架上撑管 | Column Pipe | 1 |
| 4 | 10004335 | 保持架 | Thread Guide Holder | 1 |
| 5 | 10002937 | 螺钉 (M4×25) | Screw (M4×25) | 1 |
| 6 | 10005297 | 螺母 | Nut | 2 |
| 7 | 10002958 | 螺钉 (M4×12) | Screw (M4×12) | 1 |
| 8 | 10004346 | 过线杆支杆 | Thread Guide Arm | 1 |
| 9 | 10004334 | 过线杆支柱 | Thread Guide Holder | 1 |
| 10 | 10002851 | 螺钉 (M6×5) | Screw (M6×5) | 2 |
| 11 | 10006076 | 过线杆 | Thread Guide | 1 |
| 12 | 10004286 | 撑管夹 | Column Pipe Connector | 1 |
| 13 | 10003301 | 螺钉 (M5×14) | Screw (M5×14) | 4 |
| 14 | 10002953 | 螺母 | Nut | 11 |
| 15 | 10004291 | 线架下撑管 | Column Pipe | 1 |
| 16 | 10004295 | 垫圈 | Washer | 2 |
| 17 | 10004290 | 垫圈 | Washer | 2 |
| 18 | 10002985 | 螺母 | Nut | 1 |
| 19 | 10006345 | 上过线架 | Thread Hanger | 1 |
| 20 | 10004289 | 过线管 | Thread Guide Pipe | 5 |
| 21 | 10004285 | 过线管套 | Thread Guide Bushing | 5 |
| 22 | 10003022 | 垫圈 | Washer | 6 |
| 23 | 10004298 | 上过线架 | Thread Hanger | 1 |
| 24 | 10006351 | 下过线架 | Thread Hanger | 1 |
| 25 | 10003312 | 螺钉 (M5×30) | Screw (M5×30) | 2 |
| 26 | 10004288 | 线轴 | Spool Pin | 5 |
| 27 | 10004287 | 线盘塑料压块 | Spool Cushion | 5 |
| 28 | 10004281 | 线盘软垫 | Spool Mat | 5 |
| 29 | 10004299 | 线盘 | Spool Seat Disc | 5 |
| 30 | 10004284 | 下过线架 | Thread Hanger | 1 |

