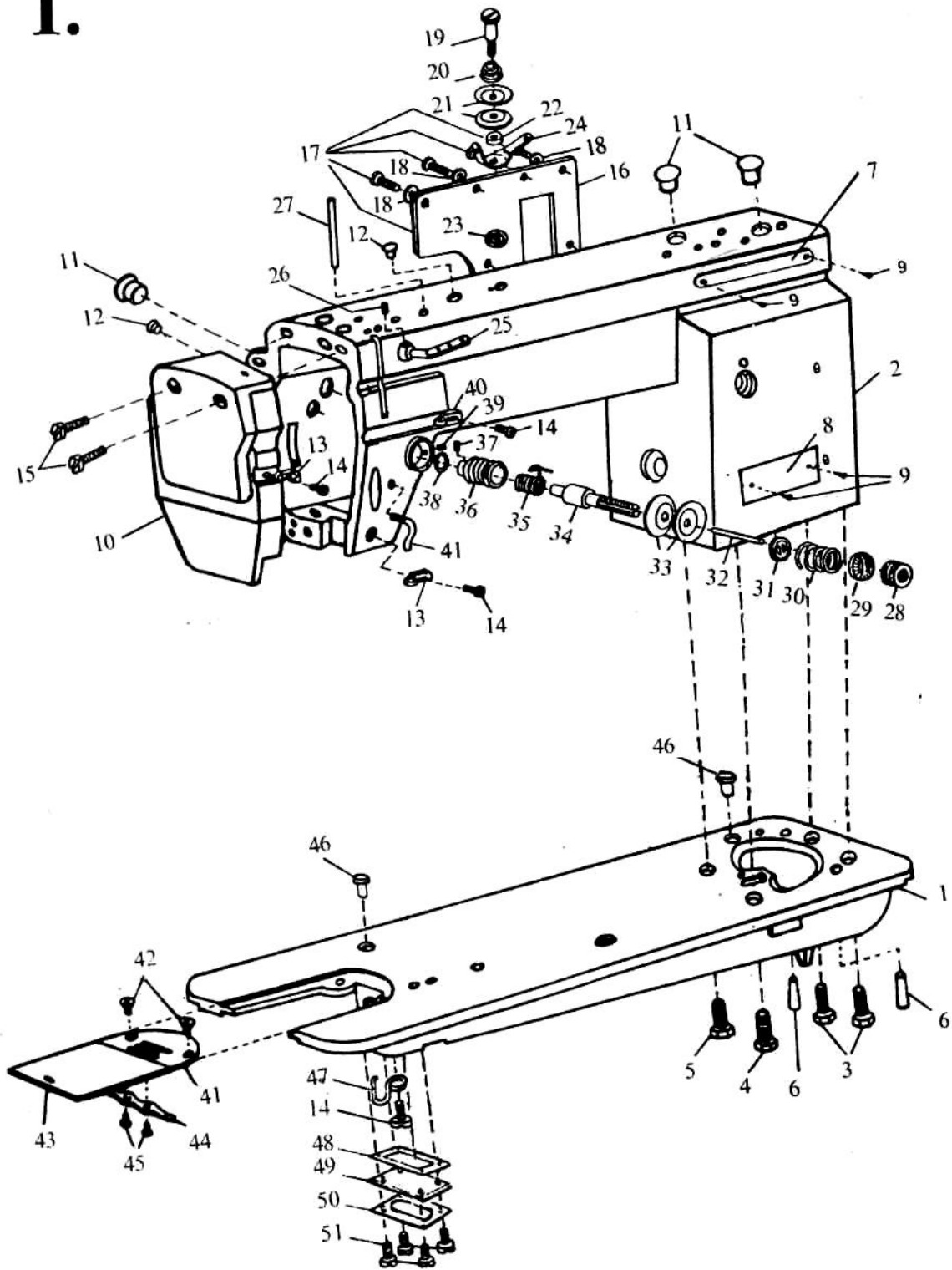


1.

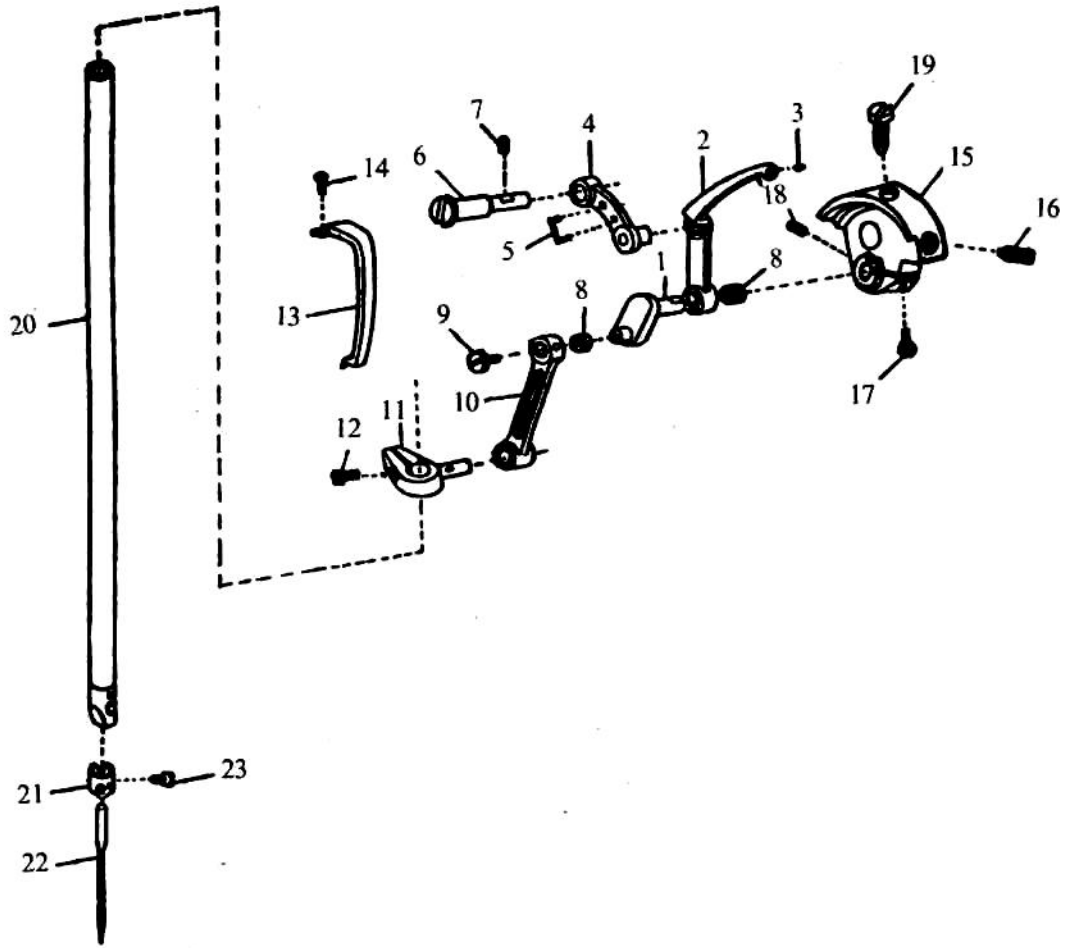


## 1. Machine Arm Parts

No.	Name	Qt.
1	Bed	1
2	Machine arm	1
3	Screw	2
4	Screw	1
5	Screw	1
6	Pin	2
7	Name plate	1
8	Trade mark plate	1
9	Nail	4
10	Face plate	1
11	Rubber plug ( $\Phi$ 19)	1
	Rubber plug ( $\Phi$ 19)	2
12	Rubber plug	
	Rubber plug	1
13	Thread finger	1
14	Screw	2
	Screw	2
15	Screw	2
16	Back cover	2
17	Screw	1
18	Washer	6
19	Screw	6
20	Spring	1
21	Tension discs	1
22	Shim	2
23	Split retainer	1
24	Thread guide plate	1

No.	Name	Qt.
25	Three- eye Thread finger	1
26	Screw	1
27	Oil pipe	1
28	Nut	1
29	Retaining ring	1
30	Tension spring	1
31	Tension releasing plate	1
32	Pin	1
33	Tension disc	2
34	Screw	1
35	Thread take-up spring	1
36	Bracket for tension adjusting	1
37	Set screw	1
38	O-ring	1
39	Set screw	1
40	Thread finger	1
41	Throat plate	1
42	Screw	2
43	Sliding plate	1
44	Spring	1
45	Screw	2
46	Oil plug	2
47	Positioning finger	1
48	Sealing ring	1
49	Sealing cover	1
50	Pressing plate	1
51	Screw	4

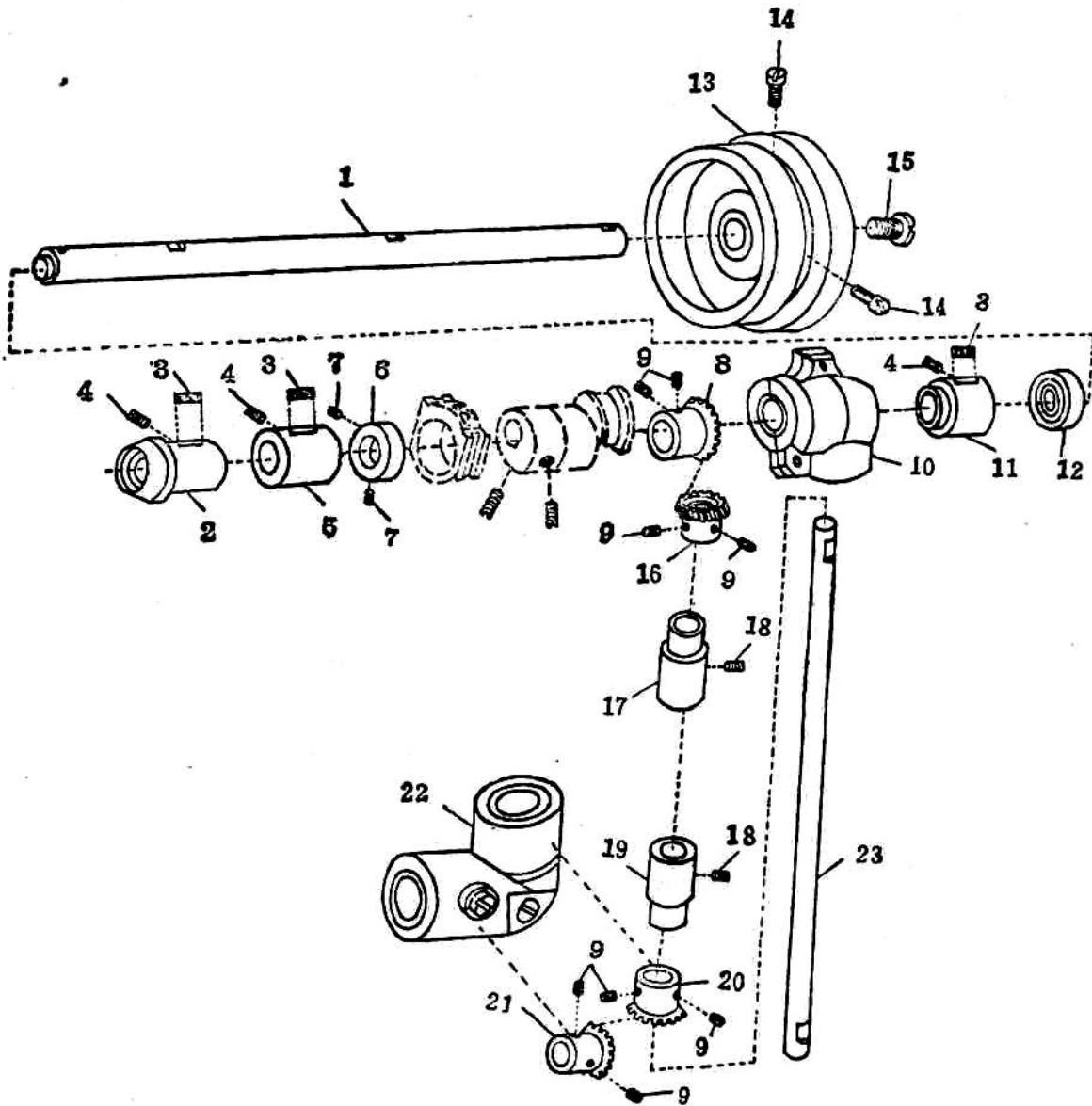
2.



## 2. Needle Bar and Thread Take-up Parts

No.	Name	Qt.
1	Thread take-up crank	1
2	Thread take-up lever	1
3	Bushing	1
4	Thread take-up link	1
5	Cotton rope	1
6	Hinge pin	1
7	Screw	1
8	Needle bearing	2
9	Screw	1
10	Needle bar link	1
11	Needle bar adaptor	1
12	Screw	1
13	Thread take-up lever guard	1
14	Screw	1
15	Needle bar crank	1
16	Tension screw	1
17	Screw	1
18	Set screw	1
19	Screw	1
20	Needle bar	1
21	Thread finger	1
22	Needle	1
23	Screw	1

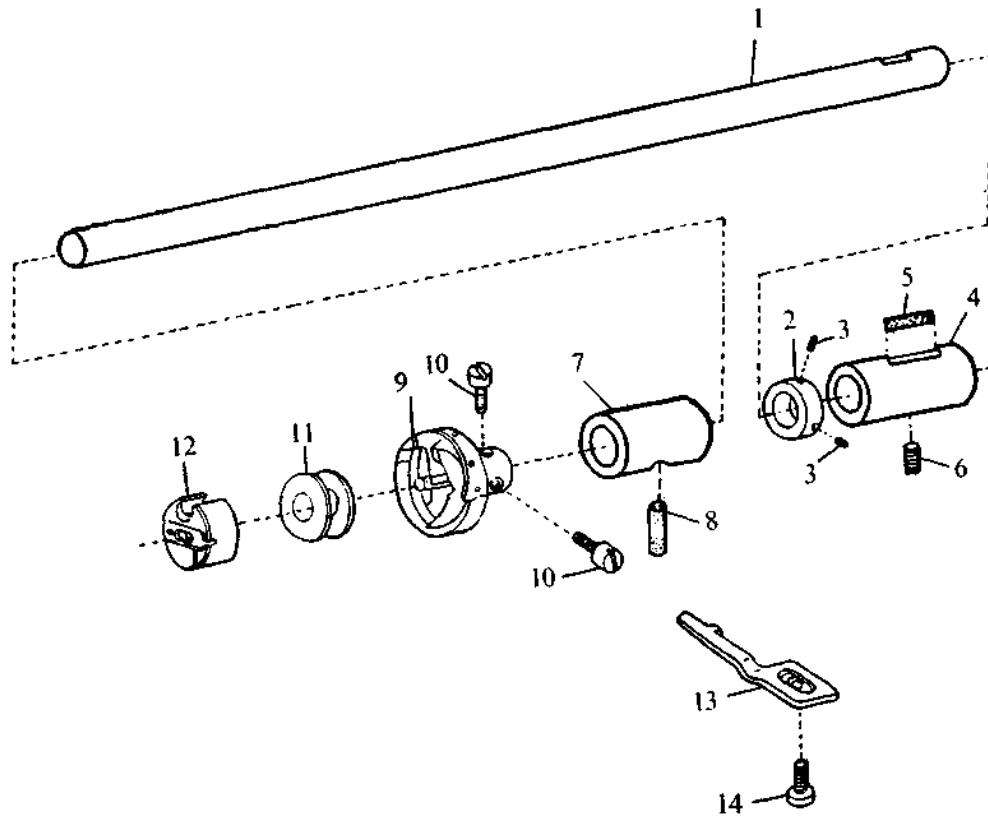
3.



### 3. Model GC6-6 needle bar and thread take-up

No.	Name	Qt.
1	Arm shaft	1
2	Arm shaft flanged bushing (front)	1
3	Arm shaft bushing oil pad (felt)	3
4	Arm shaft bushing set screw	3
5	Arm shaft bushing (middle)	1
6	Arm shaft collar	1
7	Arm shaft collar set screw	2
8	Arm shaft bevel gear	1
9	Bevel gear set screw	8
10	Bevel gear case (upper) complete	1
11	Arm shaft bushing (rear)	1
12	Arm shaft bushing (rear) oil seal assembly	1
13	Balance wheel	1
14	Balance wheel set screw	2
15	Arm shaft screw	1
16	Vertical shaft bevel gear (upper)	1
17	Vertical shaft bushing (upper)	1
18	Vertical shaft bushing screw	2
19	Vertical shaft bushing (lower)	1
20	Vertical shaft bevel gear (lower)	1
21	Rotating hook shaft bevel gear	1
22	Bevel gear case (lower) assembly	1
23	Vertical shaft	1

4.

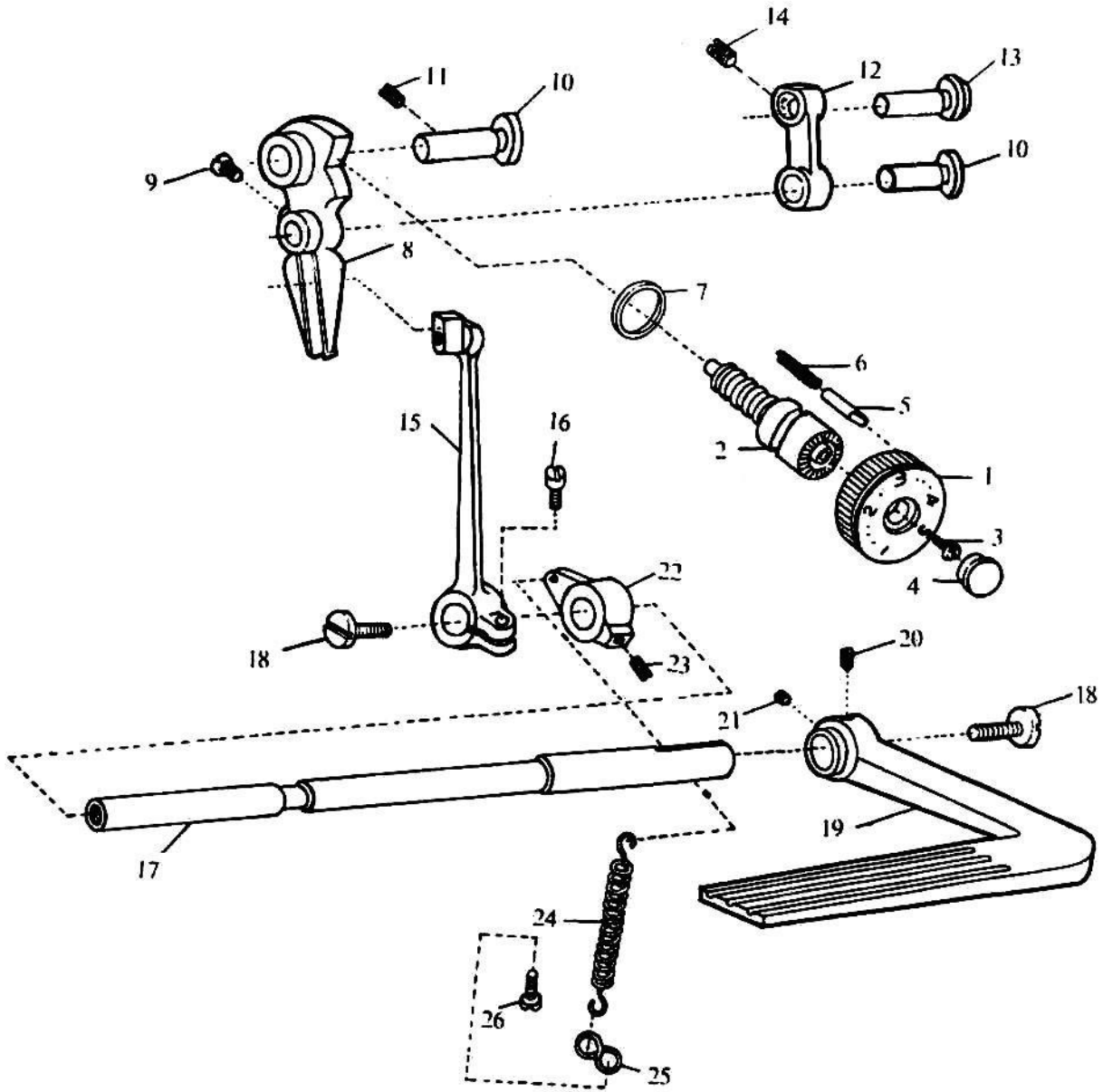




#### 4. Thread Looping Parts

No.	Name	Qt.
1	Hook shaft complete	1
2	Collar	1
3	Screw	2
4	Rear bushing	1
5	Felt	1
6	Screw	1
7	Front bushing	1
8	Felt	1
9	Hook complete	1
10	Screw	3
11	Bobbin	1
12	Bobbin case complete	1
13	Hook positioner	1
14	Screw	1

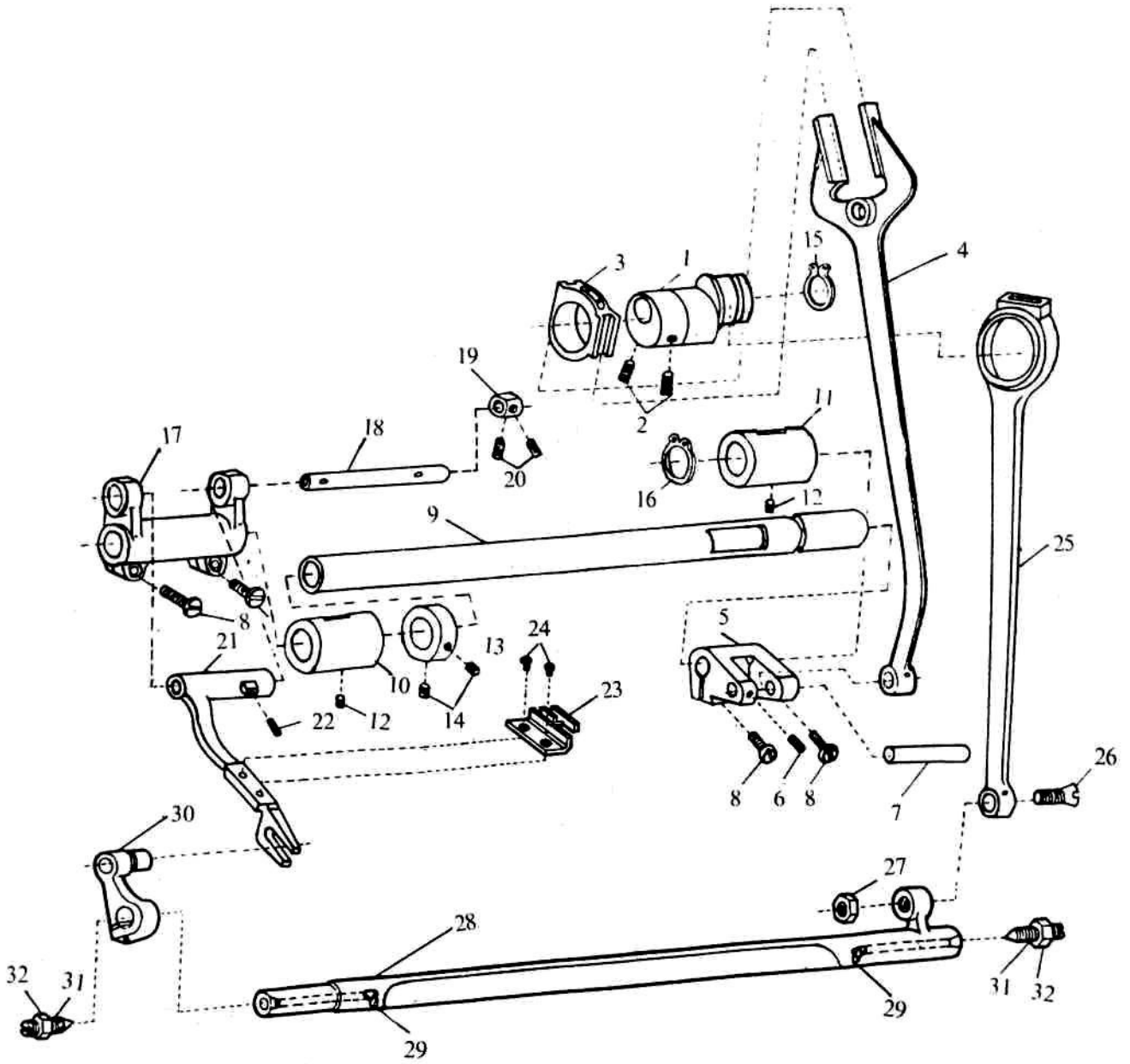
5.



## 5. Stitch Length Adjusting Parts

No.	Name	Qt.
1	Dial	1
2	Screw bolt for the dial	1
3	Screw	1
4	Rubber plug	1
5	Stop pin	1
6	Spring	1
7	O-ring	1
8	Swing bar for stitch length adjusting	1
9	Tension screw	1
10	Hinge pin	2
11	Screw	1
12	Link	1
13	Pin	1
14	Set screw	1
15	Reverse feed bar complete	1
16	Screw	1
17	Shaft	1
18	Screw	2
19	Reverse feed lever	1
20	Set screw	1
21	Set screw	1
22	Reset lever	1
23	Screw	1
24	Coil spring	1
25	Clamp for spring	1
26	Screw	1

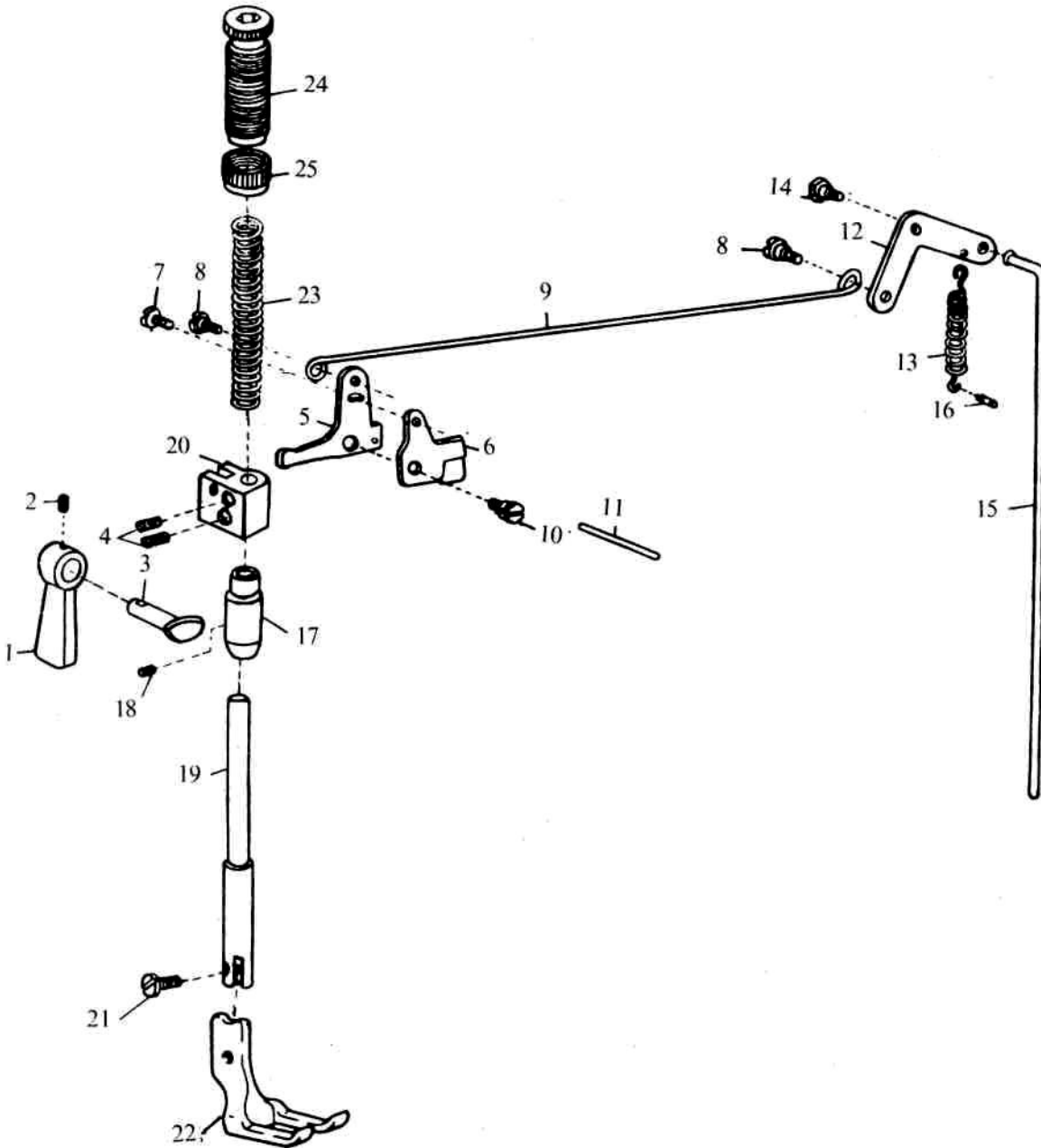
# 6.



## 6. Lower Feed Parts

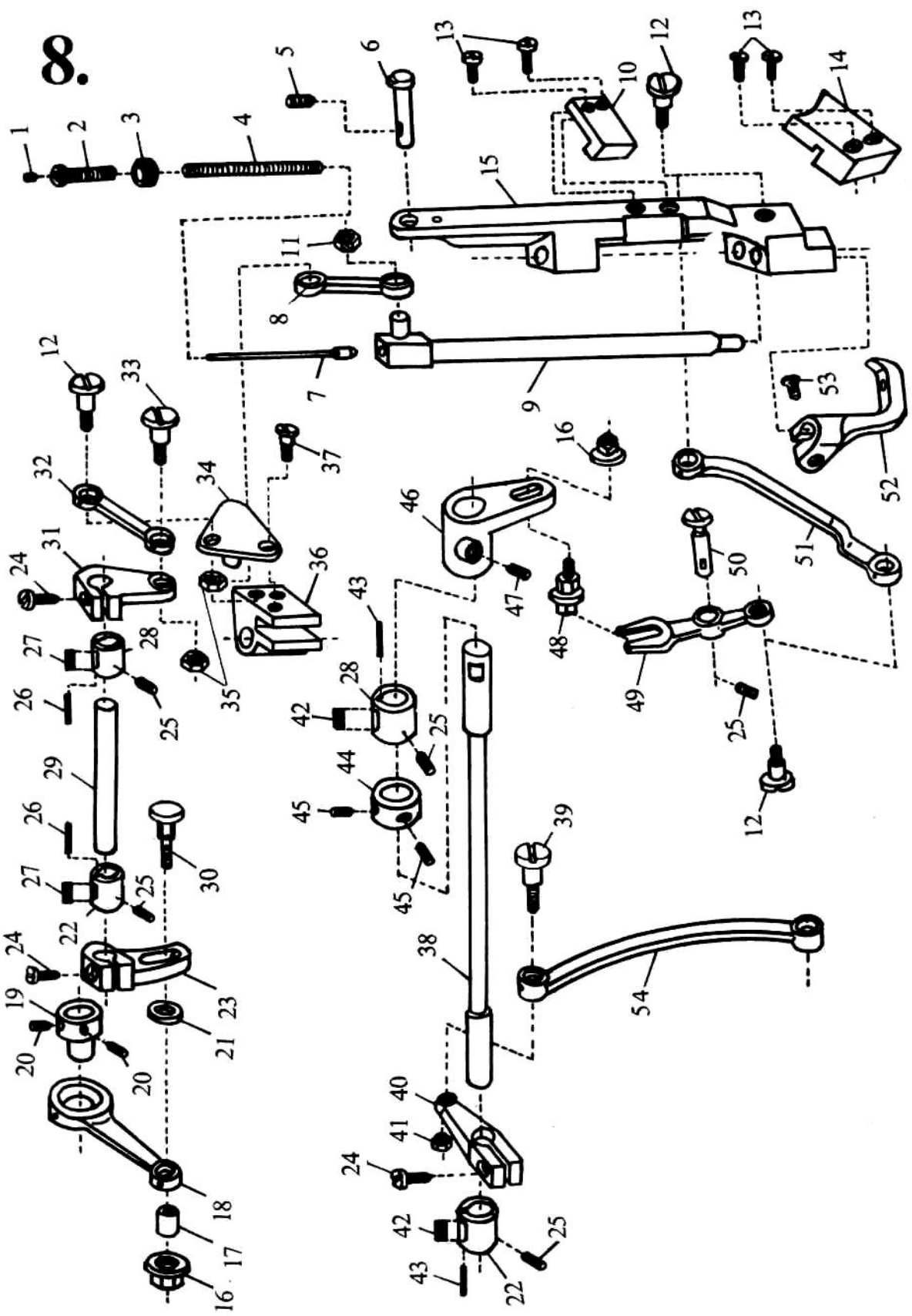
No.	Name	Qt.
1	Feed cam	1
2	Screw	2
3	Sliding block complete	1
4	Feed Fork	1
5	Feed crank	1
6	Screw	1
7	Pin	1
8	Set screw	2
9	Feed shaft	1
10	Front bushing	1
11	Rear bushing	1
12	Screw	2
13	Collar	1
14	Screw	2
15	Stop ring	1
16	Stop ring	1
17	Feed Front crank	1
18	Shaft for feed dog support	1
19	Collar	1
20	Screw	2
21	Feed dog support	1
22	Screw	1
23	Feed dog	1
24	Screw	2
25	Connecting bar	1
26	Screw	1
27	Nut	1
28	Shaft for feed dog lift	1
29	Oil wick	2
30	Feed dog lift crank complete	1
31	Screw	2
32	Nut	2

7.



## 7. Presser Foot Mechanism Parts

No.	Name	Qt.
1	Lever for presser foot	1
2	Screw	1
3	Prosser bar lift cam	1
4	Screw	1
5	Knee lifter lever (left)	1
6	Tension releasing cam	1
7	Screw	1
8	Screw	2
9	Knee lifter rod	1
10	Screw	1
11	Thread releasing pin	1
12	Knee lifter lever (right)	1
13	Spring	1
14	Screw	1
15	Knee lifter rod	1
16	Pin	1
17	Bushing for presser bar	1
18	Screw	1
19	Presser bar	1
20	Set block for presser bar	1
21	Screw	1
22	Presser foot	1
23	Spring	1
24	Screw	1
25	Nut	1



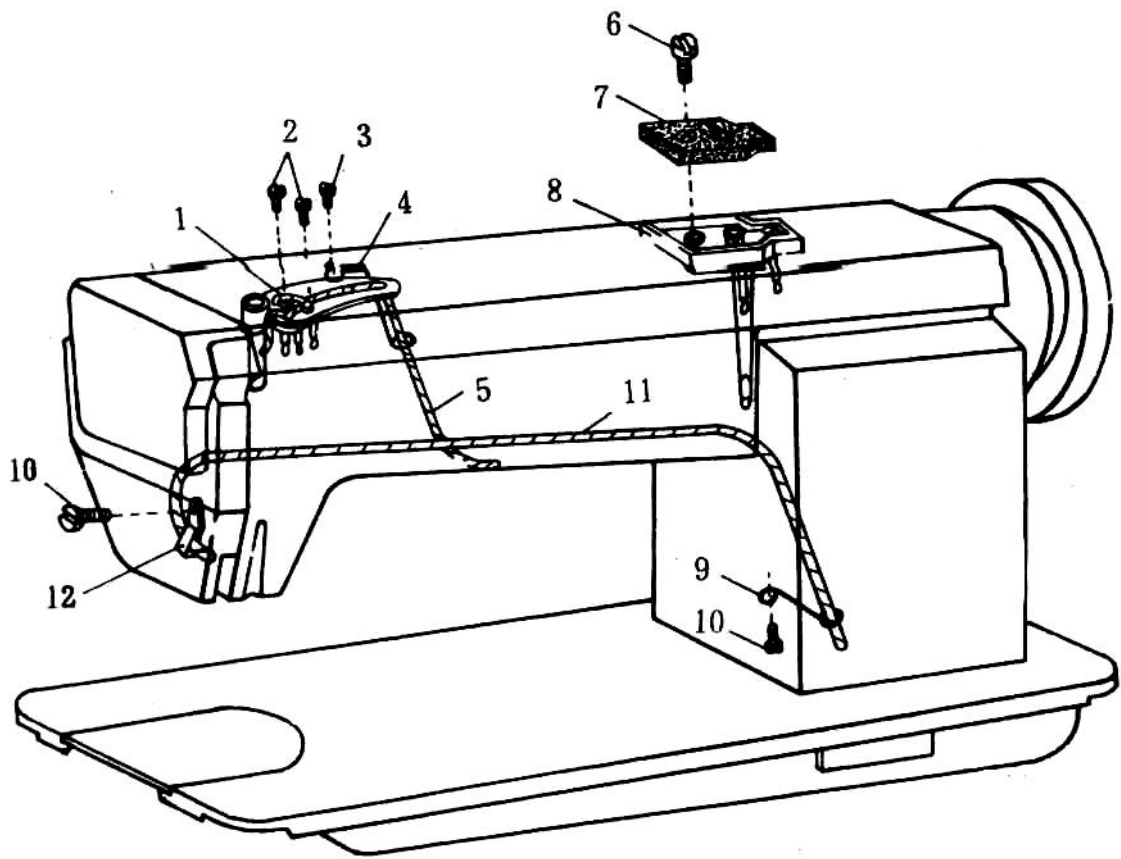


## 8. Bottom Feed

No.	Name	Qt.
1	Oil felt	1
2	Screw	1
3	Nut	1
4	Press bar spring	1
5	Screw	1
6	Needle bar move stand shaft	1
7	Spring bar	1
8	Presser foot up and down link	1
9	Connector	1
10	Slot for slide block	1
11	Slide block	1
12	Screw	3
13	Screw	4
14	Rail block	1
15	Needle bar move stand	1
16	Nut	2
17	Washer	1
18	Link	1
19	Presser foot up and down eccentric	1
20	Screw	2
21	Washer	1
22	Rear bushing	2
23	Rear crank	1
24	Screw	3
25	Set screw	5
26	Cotton wick	2
27	Oil felt	2
28	Front bushing	2
29	Presser foot up and down shaft	1
30	Screw	1
31	Front crank	1
32	Link	1
33	Bolt	1
34	Presser foot up and down lever	1
35	Nut	2
36	Presser bar set block	1
37	Bolt	1
38	Needle bar move shaft	1

No.	Name	Qt.
39	Screw	1
40	Rear crank	1
41	Screw	1
42	Felt	2
43	Cotton wick	2
44	Collar	1
45	Screw	2
46	Front crank for needle bar move	1
47	Screw	1
48	Slide block complete	1
49	Fork bar	1
50	Pin	1
51	Needle bar move link	1
52	Small presser foot	1
53	Screw	1
54	Swing presser foot link	1

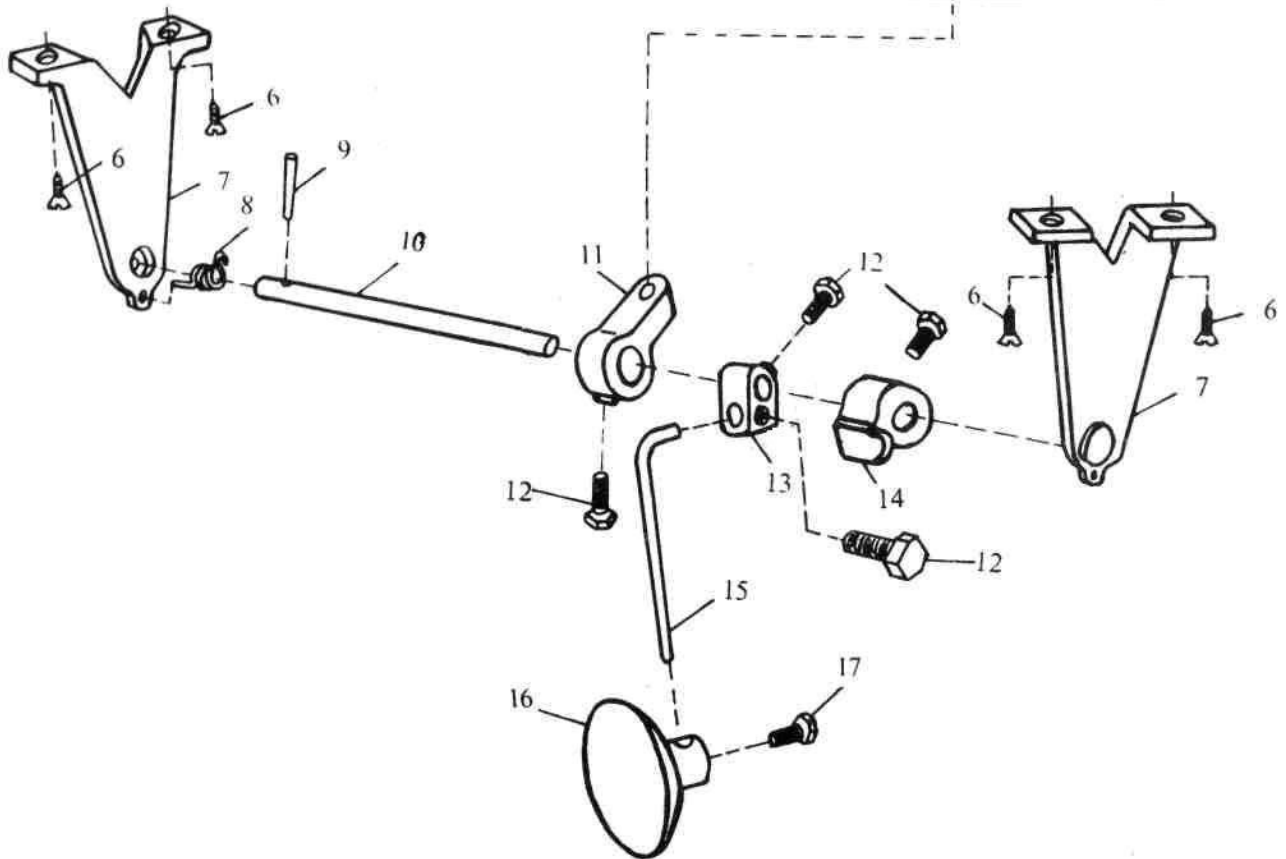
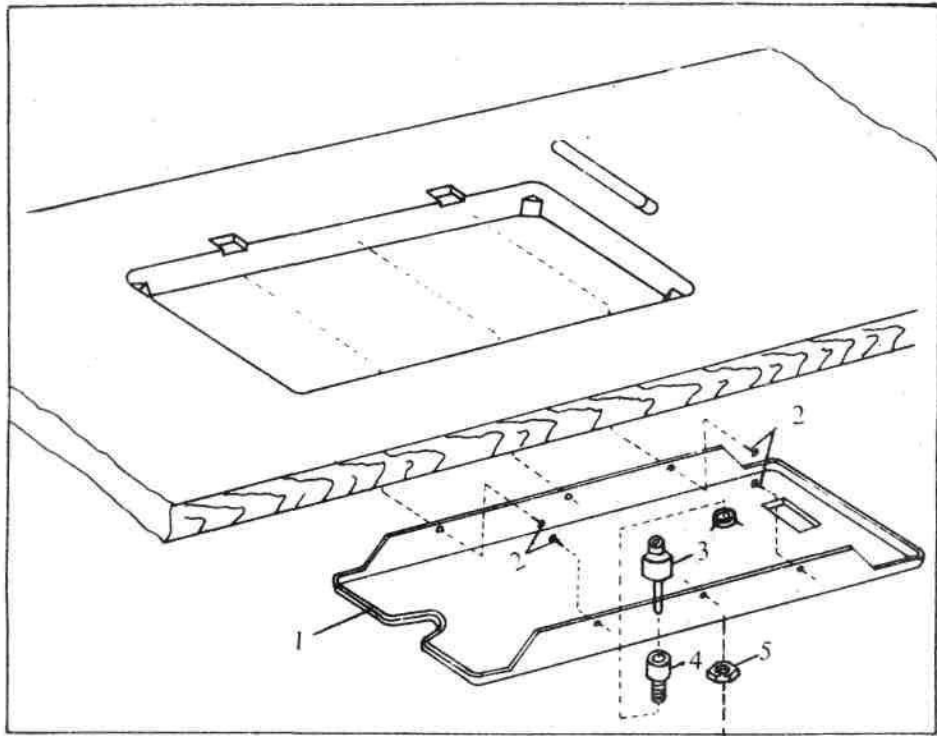
9.



## 9. Lubrication Parts

No.	Name	Qt.
1	Set plate complete for oil wick	1
2	Screw	2
3	Screw	1
4	Oil wick set finger	1
5	Oil wick	1
6	Screw	1
7	Felt	1
8	Funnel	1
9	Oil wick set finer	1
10	Screw	1
11	Oil wick	1
12	Screw	1
13	Oil wick clamp	1

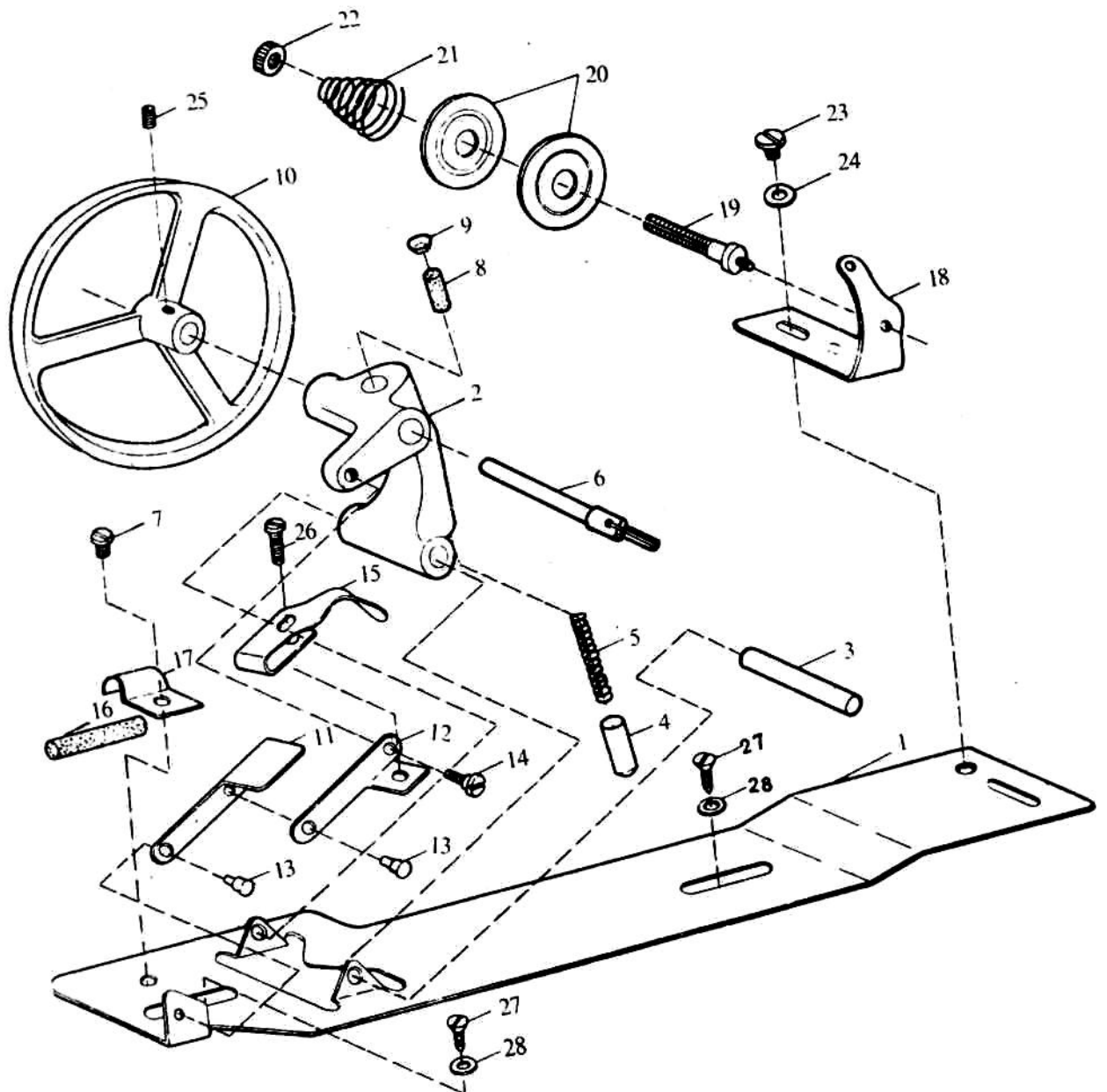
10.



## 10. Knee Lifter Parts

No.	Name	Qt.
1	Oil reservoir	1
2	Nail	6
3	Knee lifter rod	1
4	Bushing for knee lifter rod	1
5	Nut	1
6	Wood screw	4
7	Knee lifter presser foot support	2
8	Coil spring	1
9	Pin	1
10	Pin shaft	1
11	Knee lifter crank	1
12	Screw	2
13	Connector	1
14	Stop block	1
15	Knee lifting rod	1
16	Knee lifter pat complete	1
17	Screw	1

# 11.

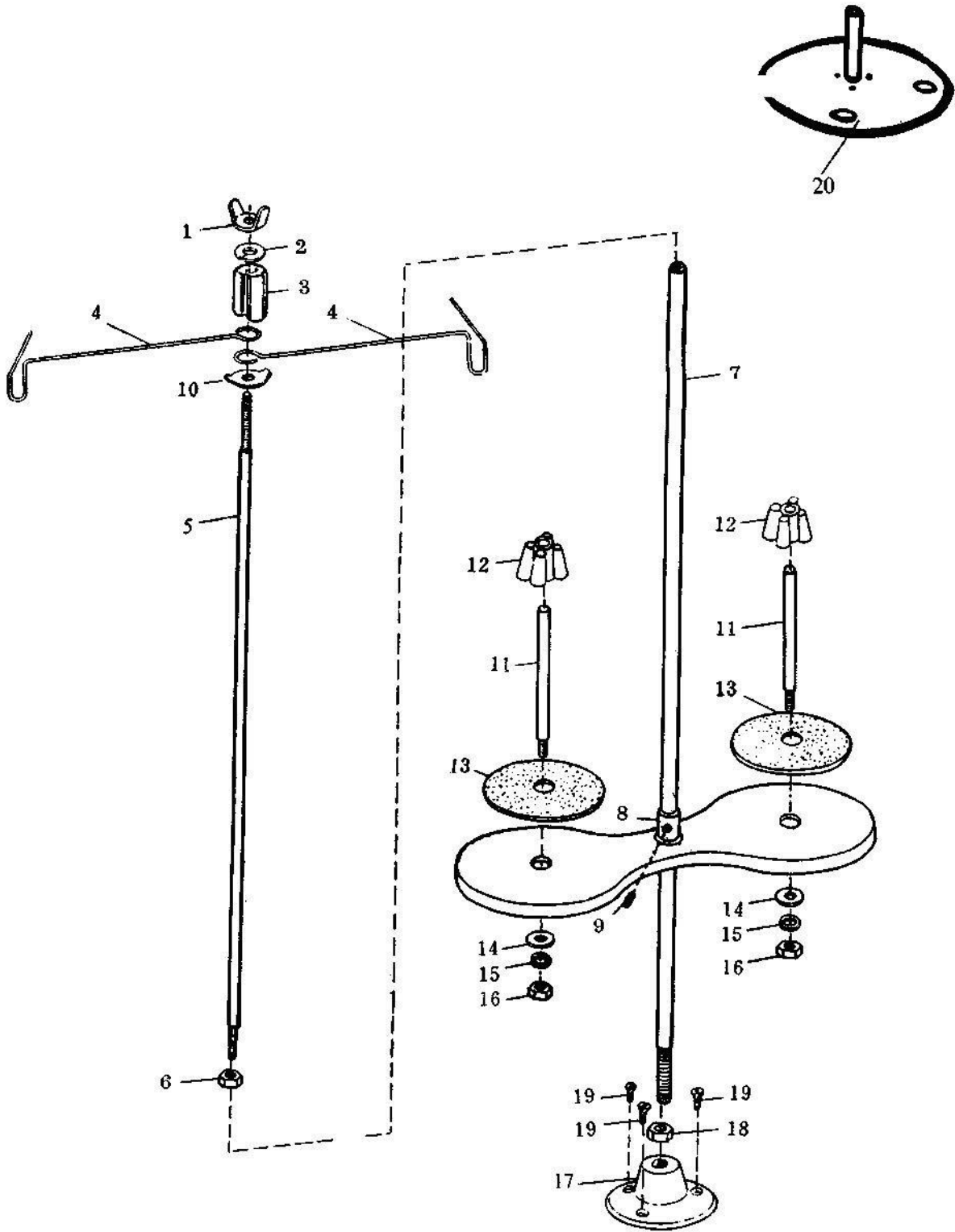


## 11. Thread Winding Parts

No.	Name	Qt.
1	Thread winder base	1
2	Thread winding bracket	1
3	Shaft	1
4	Prop pin	1
5	Spring	1
6	Shaft for thread winding	1
7	Screw	1
8	Oil wick	1
9	Cover for wick	1
10	Thread winding pulley	1
11	Thread winding swing lever	1
12	Link for thread winding	1
13	Rivet	1
14	Screw	1
15	Snatch lever	1
16	Stop block	1
17	Block clamp	1
18	Thread guide bracket	1
19	Screw	1
20	Tension discs	2
21	Spring	1
22	Nut	1
23	Screw	1
24	Washer	1
25	Screw	1
26	Screw	1
27	Wood screw	2
28	Washer	2



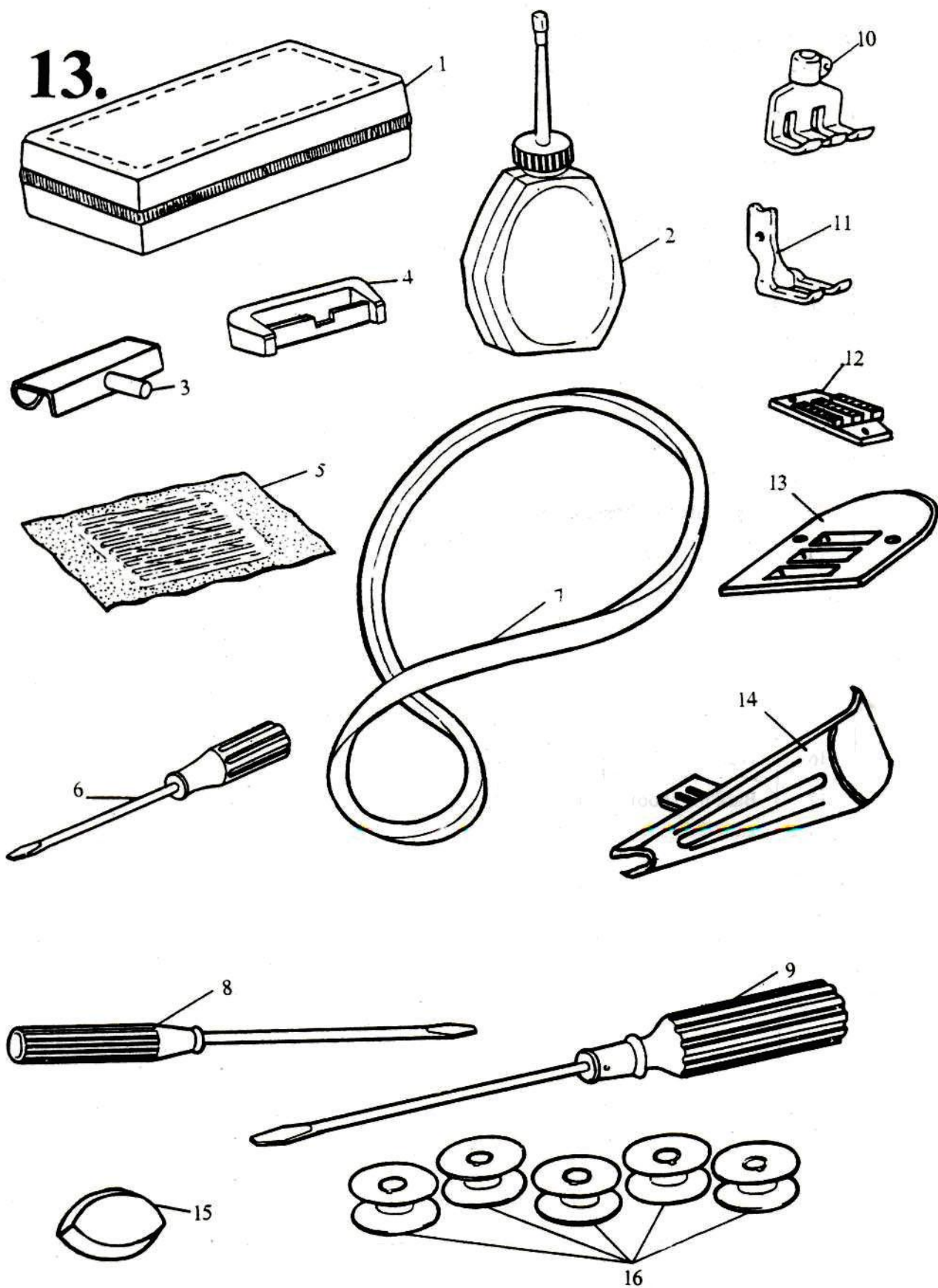
12.



## 12. Spool Stand Parts

No.	Name	Qt.
1	Nut	1
2	Washer	1
3	Thread finger cap	1
4	Thread finger	2
5	Supporting rod	1
6	Nut	1
7	Bar for spool	1
8	Bushing	1
9	Screw	1
10	Set plate for thread finger	2
11	Reel for thread roll	2
12	Control cap for thread roll	2
13	Felt shim	2
14	Washer	2
15	Springy washer	2
16	Nut	1
17	Base for spool stand	1
18	Nut	1
19	Wood screw	3
20	Tape plate complete	1

13.



### 13. Accessories

No.	Name	Qt.
1	Accessories box	1
2	Oil pot	1
3	Hinge pin	2
4	Hinge pin socket	2
5	Needle	1
6	Screwdriver	1
7	V-belt	1
8	Screwdriver	1
9	Screwdriver	1
10	Presser foot	1
11	Presser foot	1
12	Feed dog	1
13	Throat plate	1
14	Folder	1
15	Cushion	4
16	Bobbin	5