

ZIG-ZAG SEWING MACHINE

ZJ20U53A/ZJ20U53B



The latest style in the world. It is suitable for zigzag, embroidery, abutted on thin, medium thick Fabrics garments, shoes and caps, leather articles, bags etc. Beautiful stitch and easy operation. The forward and backward needle gauge is adjustable.

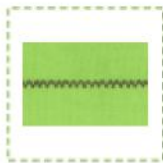
STITCH PATTERNS



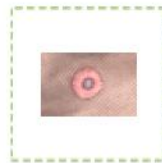
ZJ 20U53A



ZJ 20U53B



ZJ20U53A



ZJ20U53B



			 mm					 mm	 rpm	 mm	 GW kg
ZJ20U53A	DPX5	5	5	*	*	*	6.35/9	2000	560x256x365	25/21	
ZJ20U53B	DPX5	5	5	*	*	*	6.35/9	2000	560x256x365	25/21	