

JUKI[®]

LU-2810-7

Direct-drive, 1-needle, Unison-feed, Lockstitch Machine with Vertical-axis Large Hook

LU-2810

1-needle, Unison-feed, Lockstitch Machine with Vertical-axis Large Hook



NEW

High and long arm has been adopted.

The long distance from the machine arm to the needle contributes to improved workability.

The LU-2810 Series is a unison-feed, lockstitch machine with a vertical-axis large hook which is provided with substantially improved functions and performance.



LU-2810S-7/CP180

Direct-drive, 1-needle, Unison-feed, Lockstitch Machine with Vertical-axis Large Hook

LU-2810-7

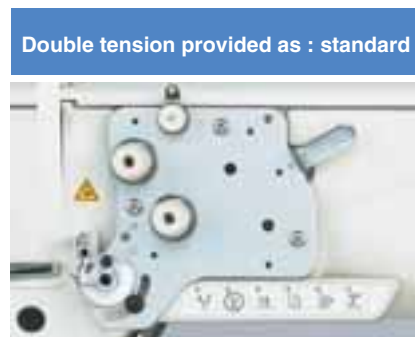
Functions for improving seam quality and workability.

The long distance from the machine arm to the needle contributes to improved workability

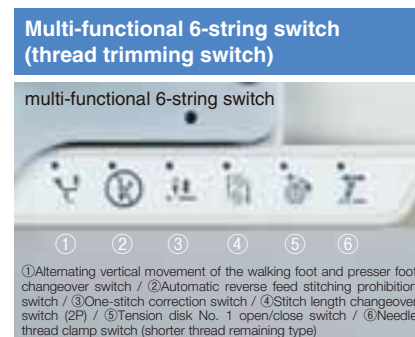


LU-2810S-7/CP180

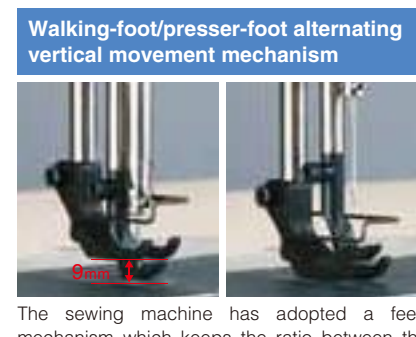
Thread tightness can be kept same, even the multi-level of material.



Double tension provided as : standard
Single or Double can be set easy through Multi-functional 6-string switch, regarding the machine with trimmer.(Available for more thick material)



In addition to the one-touch type reverse feed switch, a multi-functional 6-string switch is also provided. Changeover of the amount of the alternating vertical movement of the walking foot and the presser foot and changeover of the stitch length can be done simply with this one switch.



The sewing machine has adopted a feed mechanism which keeps the ratio between the amount of the vertical movement of the walking foot and that of the presser foot constant even when the material is changed. The amount of the alternating vertical movement of the walking foot and the presser foot is 9 mm at the maximum. This amount can be set with ease by means of the large dial installed on the upper section of the sewing machine.

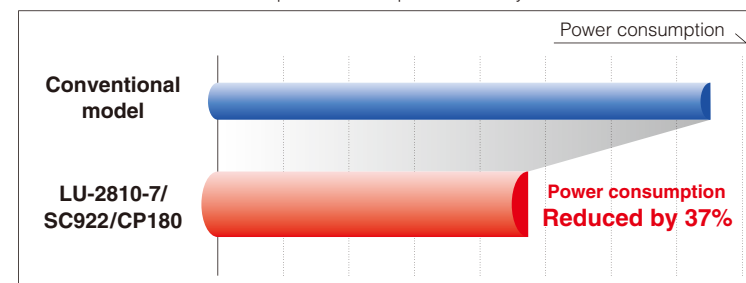
Mechanisms have been designed taking maintainability and environmental friendliness into consideration.

● High-torque direct-drive motor is installed.

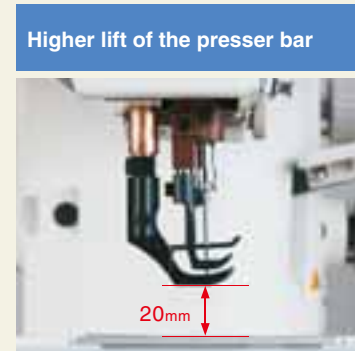


The sewing machine provided with a thread trimmer has adopted a high-torque direct-drive motor which is suitable for heavy-weight materials. As a result, the sewing machine is excellent at its responsiveness and ensures increased penetration into the material even when sewing multi-layered parts.

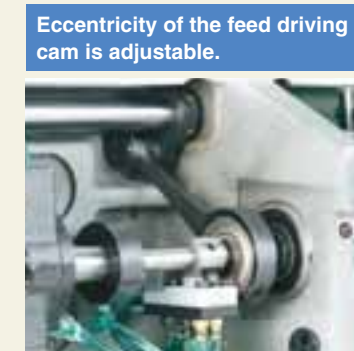
The direct-drive motor system has been adopted by all of the sewing machines with a thread trimmer. As a result, the sewing machine starts up swiftly and promises increased stop accuracy, thereby demonstrating improved responsiveness. In addition, the machine is no longer provided with a V-belt. This means that the adoption of the direct-drive motor is also effective in the elimination of belt shavings. Power is directly transmitted from the motor to the sewing machine, thereby contributing to reduced power consumption. (This sewing machine reduces power consumption by 37% as compared with the conventional models.) Adoption of a direct-driven main shaft and a revamping of mechanism design contribute to remarkably reduced noise. Noise has been reduced by 3.5dB as compared with the conventional model to produce this operator-friendly machine.



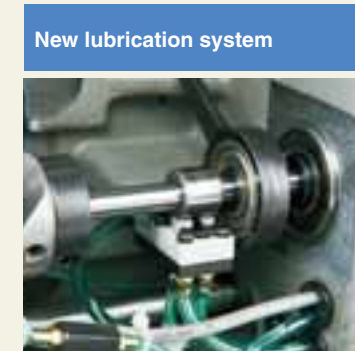
Dramatically advanced availability for material



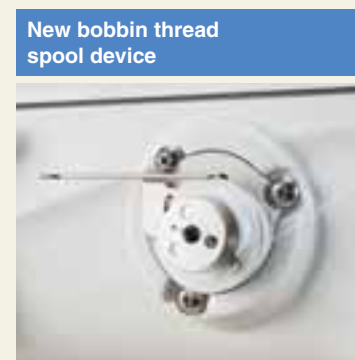
A presser bar height of 20 mm is achieved when using the automatic presser bar lifting lever. Thanks to this feature, the process of joining leather and heavy-weight sponges, which are usually used as materials for expensive sofas, can be carried out with ease.



Adjustment of the eccentricity of the feed driving cam has been enabled. As a result, the sewing machine is able to perform sewing with the feed that is best-suited to the material and thread used. It is no longer necessary to prepare other subclass model sewing machines.



Lubrication system is powerful and stable even low speed.



New bobbin thread spool device is no necessity of rolling thread manually.

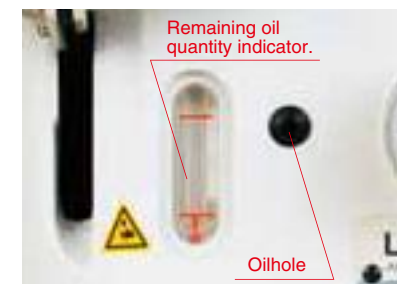


The sewing machine with a thread trimmer is provided as standard with a 2-pitch dial. One unit of this sewing machine is able to sew different sewing lengths since the sewing length can be instantaneously changed over.

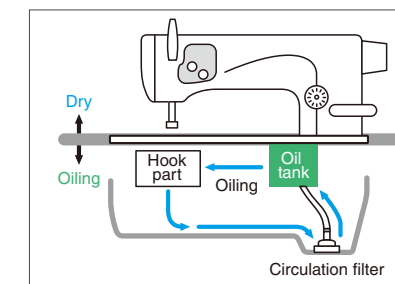


The hook which can be adjusted with screw amount of needle guard contact to needle. The needle guard can be easily adjusted. Therefore, it prevents stitch skipping and wear of hook edge.

● Easy to find remaining oil quantity



● New-type tank style automatic lubrication mechanism has been adopted.



The oil dropped from the hook and its surrounding sections into the under-cover is filtered to remove dirt and dust and is then returned to the oil tank. This method saves the effort of oiling and reduces oil consumption. The remaining oil quantity indicator is provided on the front face of the machine head. Lubrication can be carried out without tilting the machine head.

JUKI ECO PRODUCTS The LU-2810-7 is an eco-friendly product which complies with JUKI ECO PRODUCTS standards for protecting the environment.

- This sewing machine reduces power consumption by 37% as compared with the conventional models.
- As compared with the conventional model, LU-2810-7 reduces noise by 3.5 dB.
- The sewing machine complies with the "Juki Group Green Procurement Guidelines" on the use of hazardous substances, which is stricter than other restrictions, such as those of the RoHS Directive.

For details of JUKI ECO PRODUCTS, refer to: http://www.juki.co.jp/eco_e/index.html
*The RoHS Directive is an EU Directive limiting the use of 6 hazardous substances (lead, hexavalent chromium, mercury, cadmium, PBB and PBDE) in electrical and electronic equipment. The Juki Green Procurement Guideline is the voluntarily established criteria to eliminate not only the aforementioned six substances, but also other ones which also adversely affect the environment.

■ ATTACHMENTS

Suspended ruler H152

Description	Parts No.
Suspended ruler (asm.) H152	MAH-152010A0
Suspended ruler adapter plate	40112214
Screw	SM6051402TP x2
Screw	SM6061402TP x2

■ SPECIFICATIONS

Model name	LU-2810-7	LU-2810
Type	1-needle with automatic thread trimmer	1-needle
Max. sewing speed	3,000sti/min	
Max. stitch length	9mm	
Stitch length dial	2 pitch dial	1 pitch dial
Presser foot	Auto: 20mm, By hand: 10mm	
Auto lifter	Provide as standard	Option
Alternating vertical movement	1~9mm	
Alternating vertical movement adjusting method	Large dial	
DL device	Provide as standard	—
Needle thread tension	Single/Double-tension	Double-tension
Hook	Vertical axis 2 fold-capacity hook	
Bottom-feed micro-adjustment mechanism	Provided as standard	
Needle	135x17 Nm160 (Nm125~Nm180)	
Thread	#30~#5, B46~B138, Mn=60/3~20/3	
Lubrication	Automatic (Tank system)	
One-touch type reverse feed switch	Provide as standard	—
Hand switch	Multi-functional 6-string switch	—
Safety mechanism	Provided as standard (reset with the push of a button)	
Power requirement / Power consumption	Single-phase 100~120V / 200~240V , 3-phase 200~240V / 180VA (with automatic thread trimmer)	
Machine head weight	61kg	56kg

*"sti/min" stands for "Stitches per Minute."

■ WHEN YOU PLACE ORDERS

Please note when placing orders, that the model name should be written as follows:

Machine head

[With automatic thread trimmer]

Gauge type	Code	Wiper and one-touch type reverse feed		
Standard gauge	S	Wiper	One-touch type reverse feed	Code
gauge for europe	A	Not provided	Provided	0B

LU2810 70BBS

Control Box	Code	Automatic foot lifter	Code	Alternating vertical dial	Code
SC-922	7	Provided (pedal-driven)	B	Provided	S

Machine head

[Without automatic thread trimmer]

Gauge type	Code
Standard gauge	S
gauge for europe	A

LU2810 S

Alternating vertical dial	Code
Provided	S

Control box

SC922B

Power supply	Code
Single-phase 100~120V	S
3-phase 200~240V	D
Single-phase 200~240V (for general export)	K
Single-phase 200~240V (for ce)	N
Single-phase 200~240V (for china)	U

Operation panel

CP18C
CP180C



JUKI CORPORATION HEAD OFFICE

Juki Corporation operates an environmental management system to promote and conduct the following as the company engages in the research, development, design, sales, distribution, and maintenance of industrial sewing machines, household sewing machines, industrial robots, etc., and in the provision of sales and maintenance services for data entry systems:

- (1) The development of products and engineering processes that are safe to the environment
- (2) Green procurement and green purchasing
- (3) Energy conservation (reduction in carbon-dioxide emissions)
- (4) Resource saving (reduction of papers purchased, etc.)
- (5) Reduction and recycling of waste
- (6) Improvement of logistics efficiency (modal shift and improvement of packaging, packing, etc.)

JUKI® 2-11-1, TSURUMAKI, TAMA-SHI,
TOKYO 206-8551, JAPAN
PHONE : (81) 42-357-2254
FAX : (81) 42-357-2274
http://www.juki.com

* Specifications and appearance are subject to change without prior notice for improvement.
* Read the instruction manual before putting the machine into service to ensure safety.